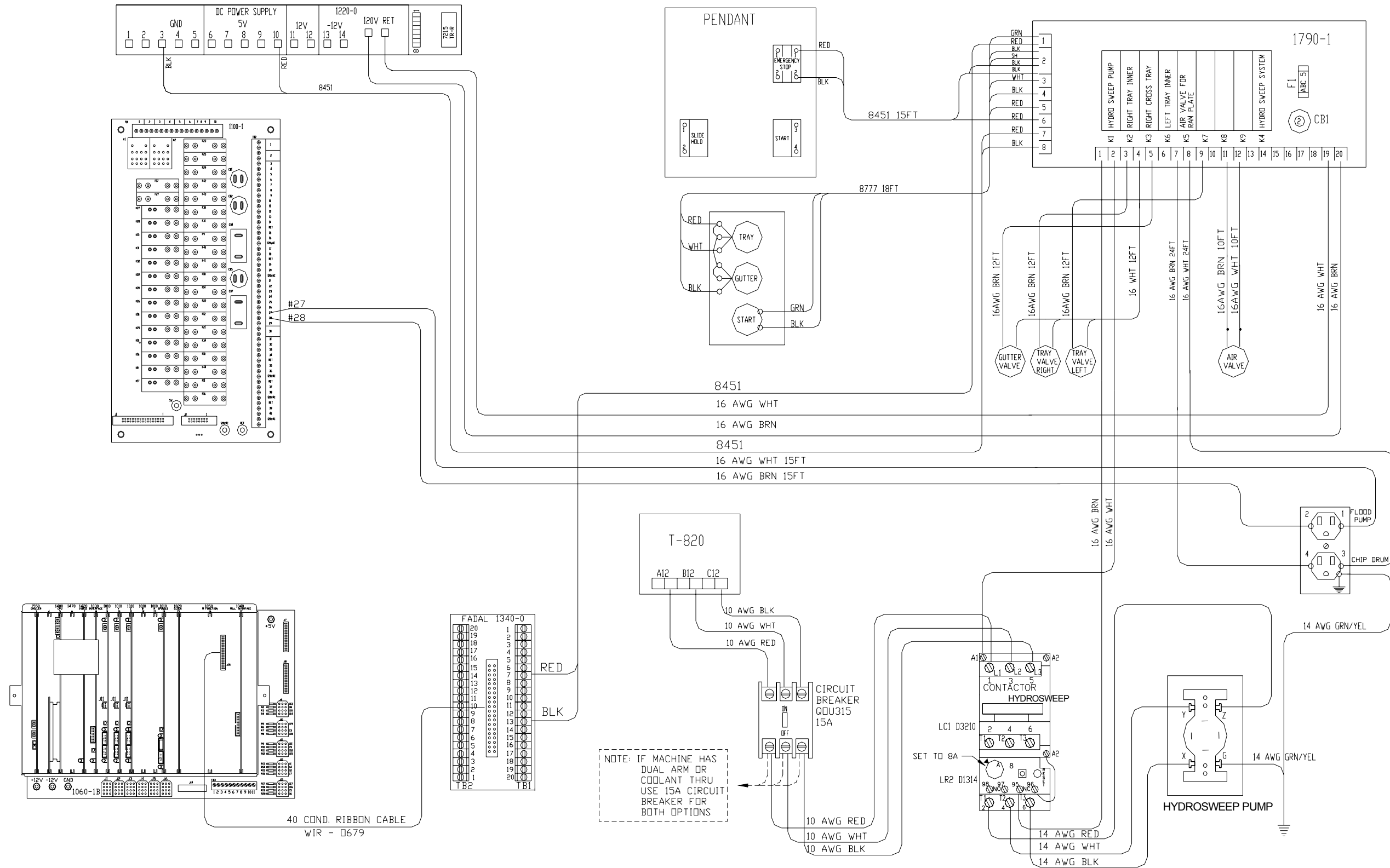


SECTION 5

Options

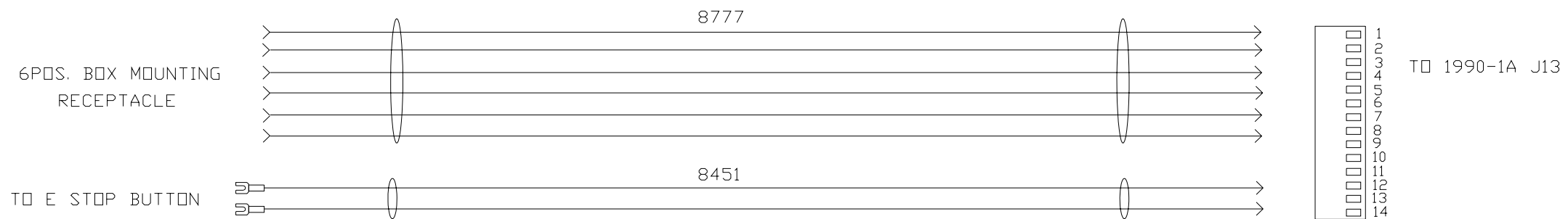
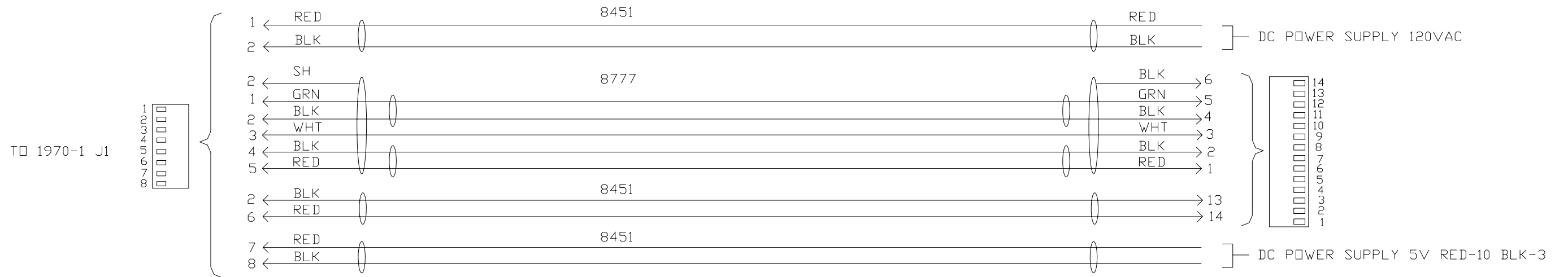
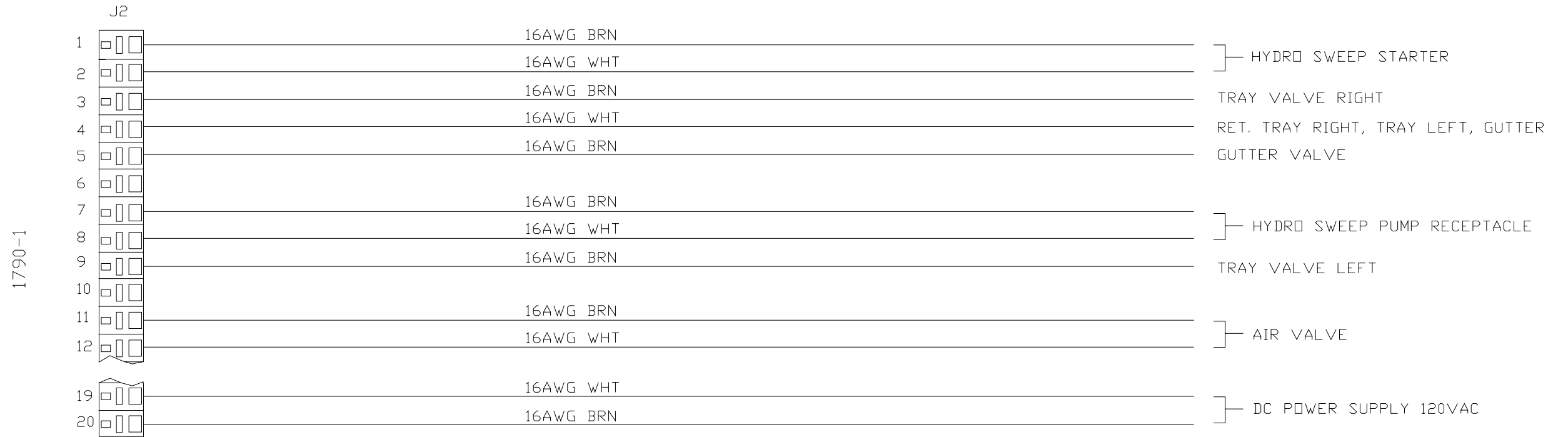
WRG_0011C_sht1of2_hydro_sweep_3valves



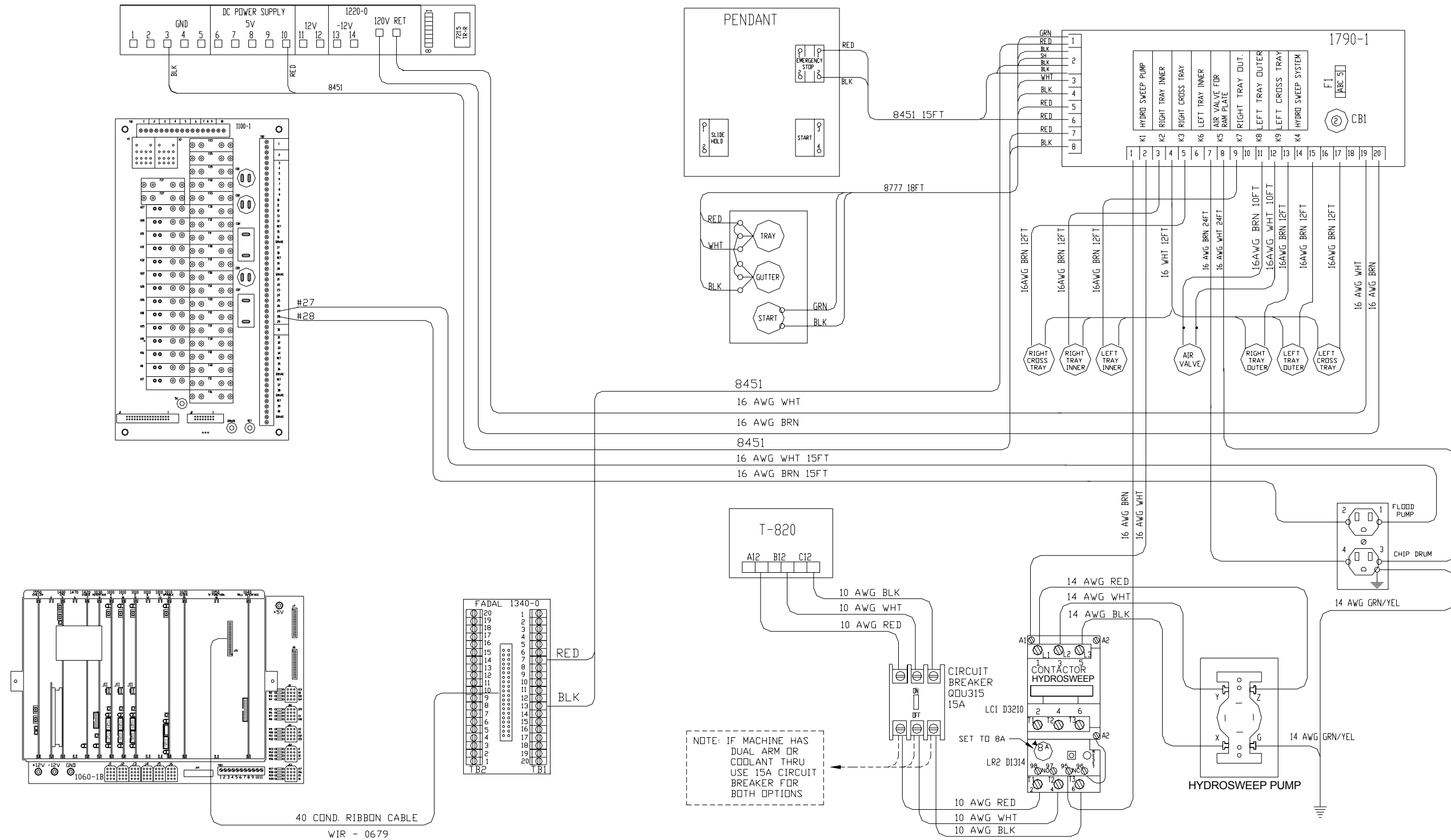
NOTE: IF MACHINE HAS DUAL ARM OR COOLANT THRU USE 15A CIRCUIT BREAKER FOR BOTH OPTIONS

NOTE: INSTALL EPROM VERSION 5.4 ON 1790-1 BOARD.

WRG_0011A_sht2of2_hydro_sweep_harness

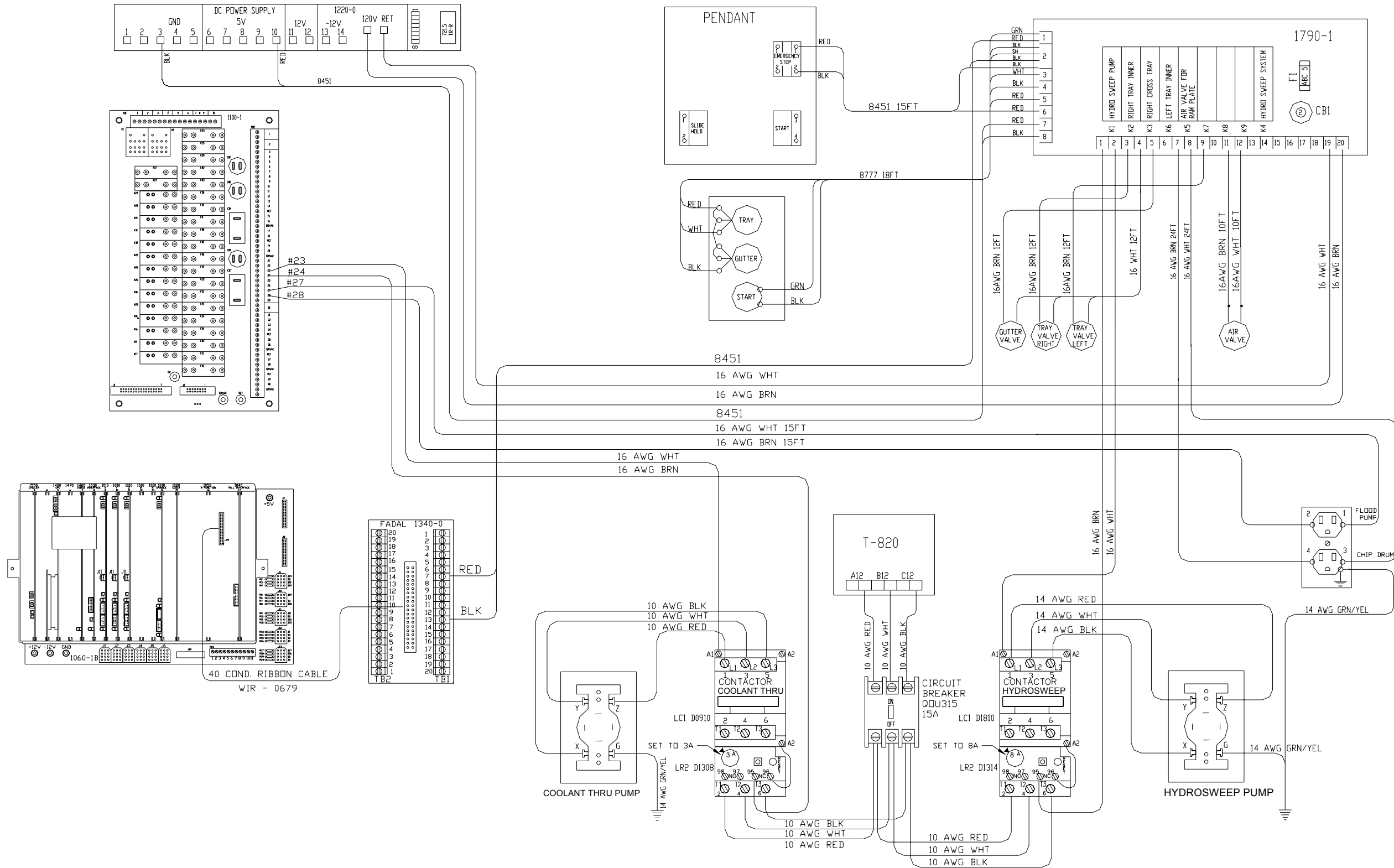


Wrg_0012C_hydro_sweep_6valves

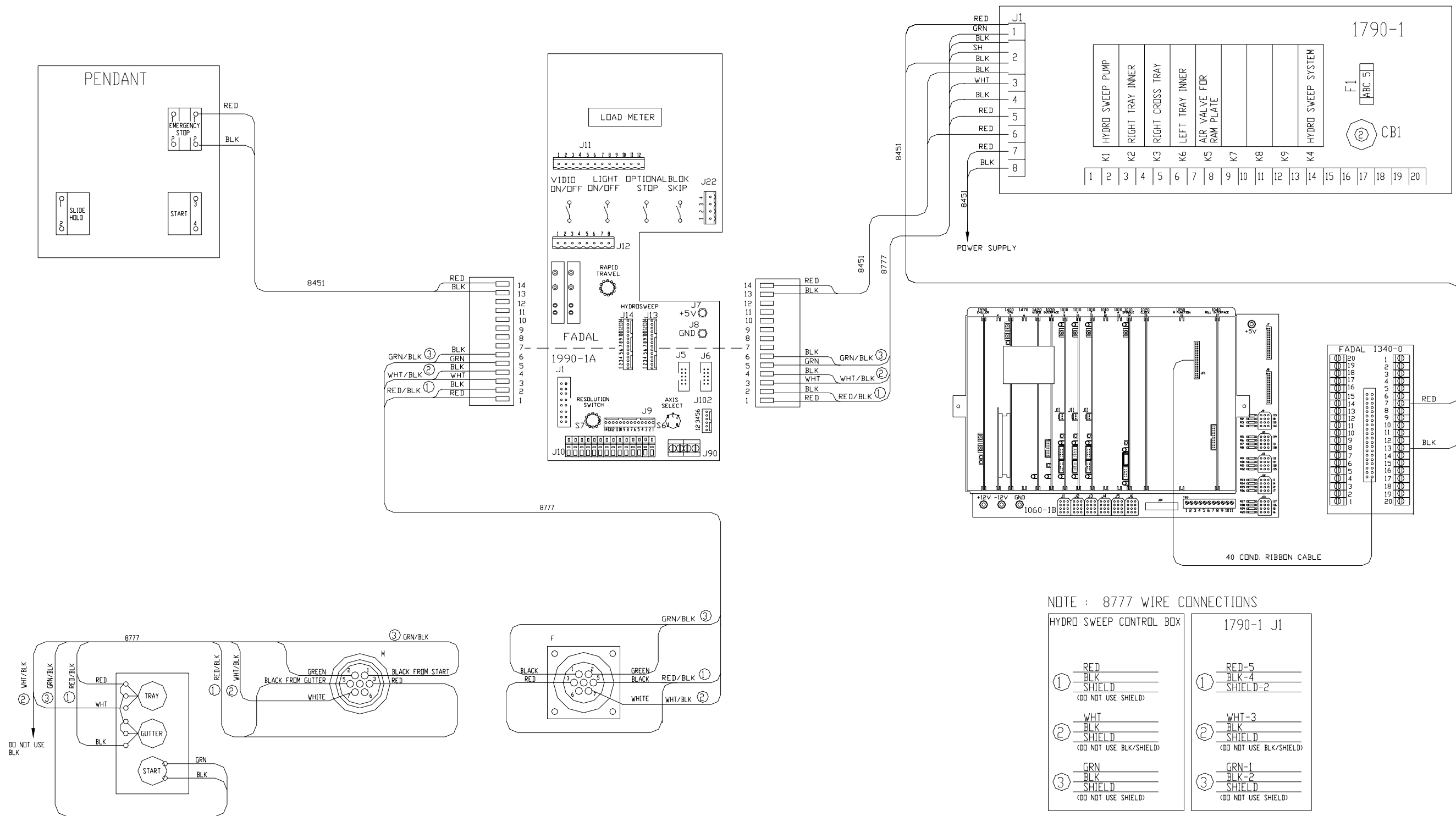


NOTE: INSTALL EPROM VERSION 6.4 ON 1790-1 BOARD.

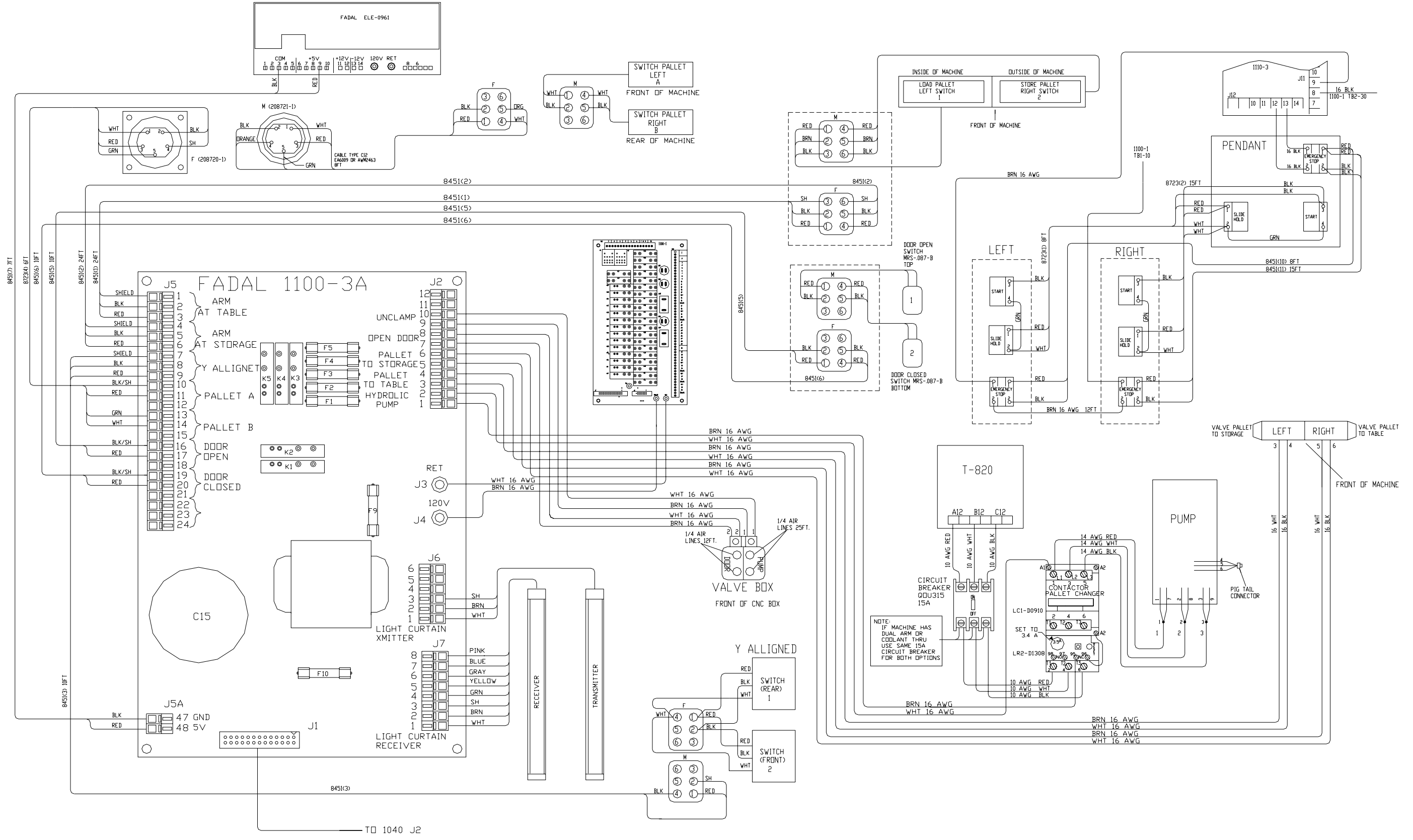
Wrg_0013B_hydro_sweep_coolant_thru



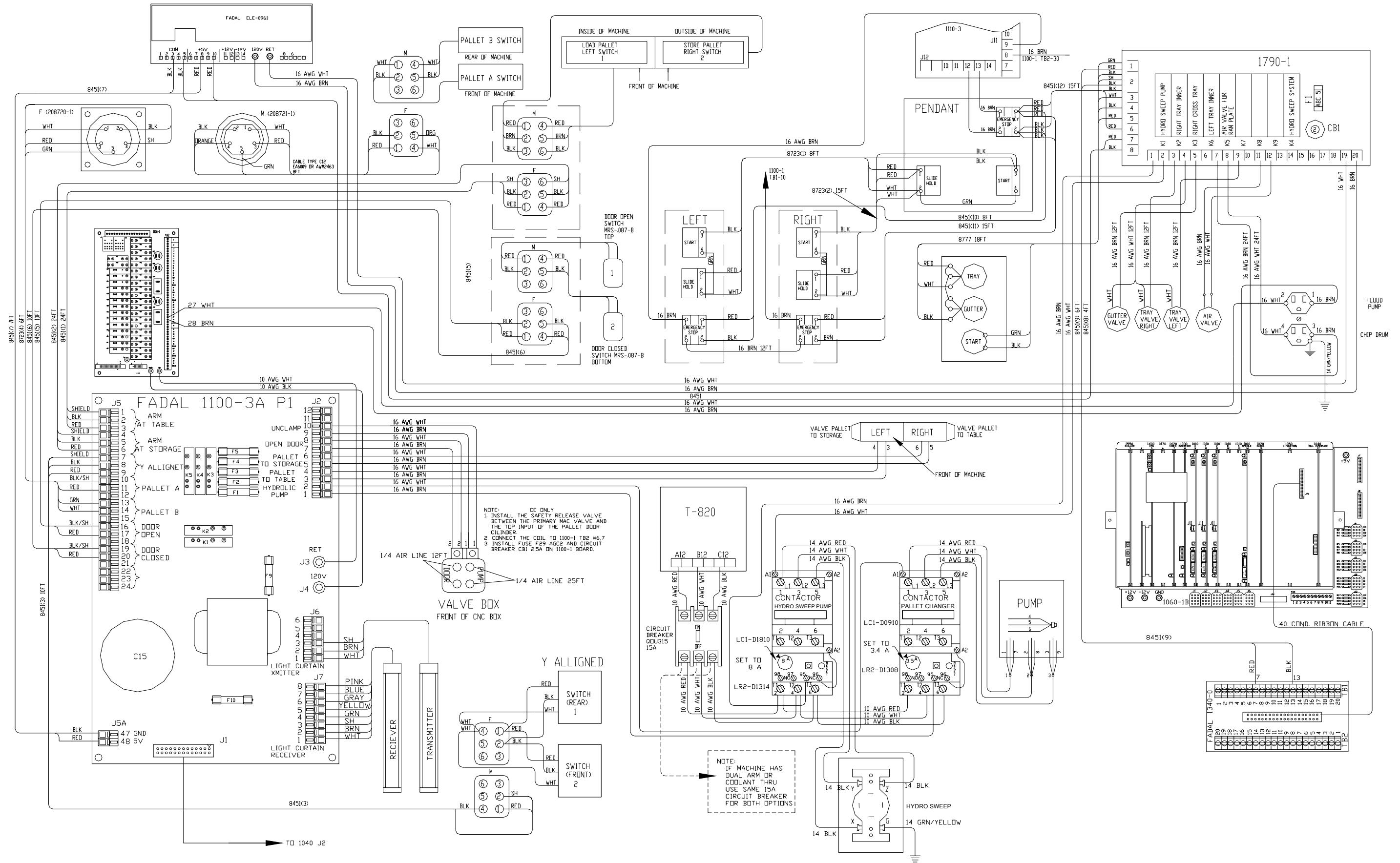
Wrg_0022A_hydro_sweep_1990_1a_board



Wrg_0017B_pallet_changer



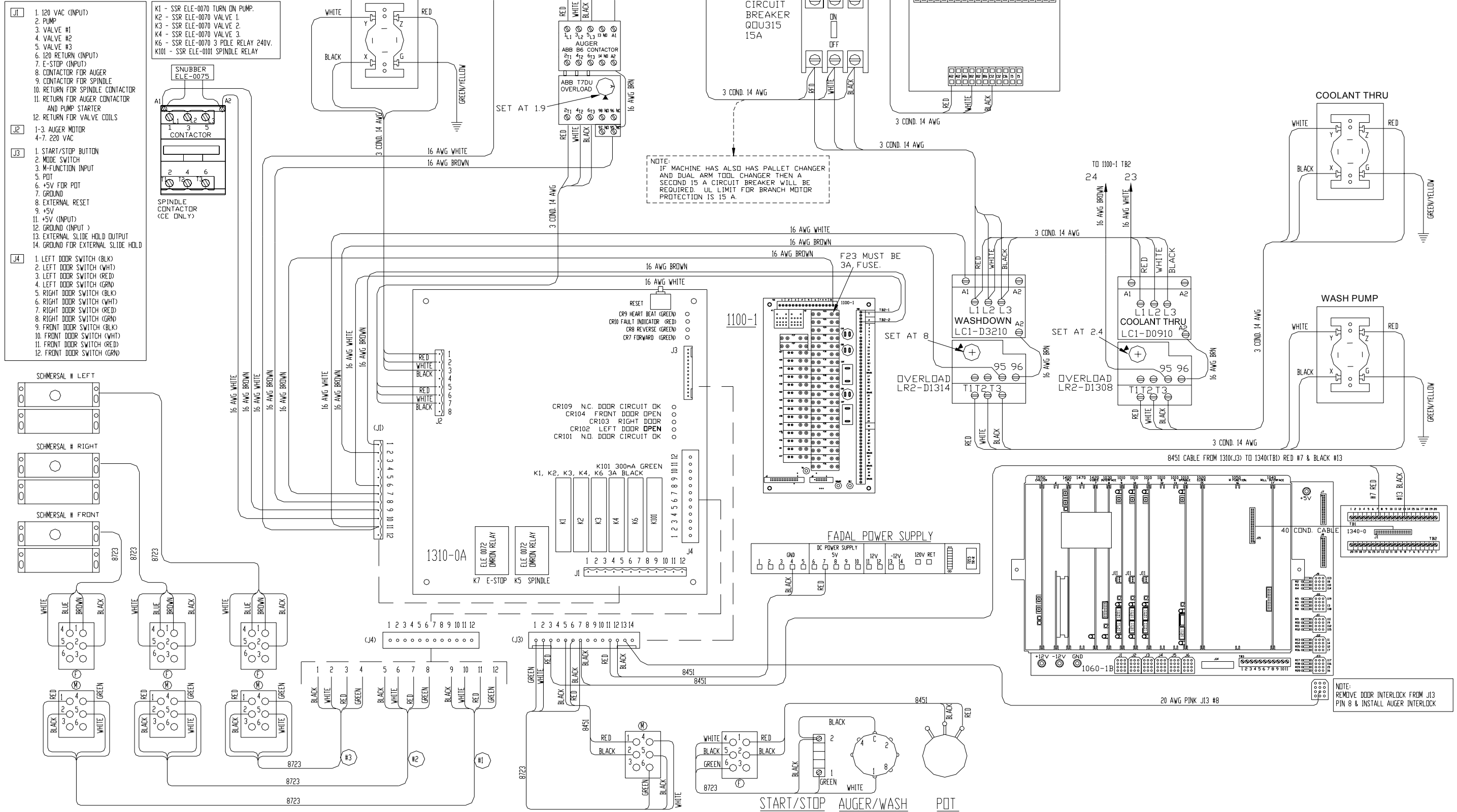
Wrg_0018B_pallet_changer_hydro_sweep



Wrg_0037F_auger_washdown_coolantthru

1310 PIN LIST

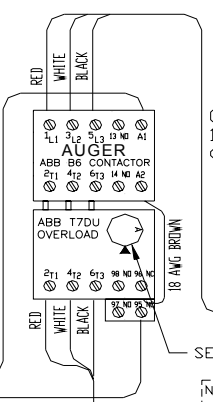
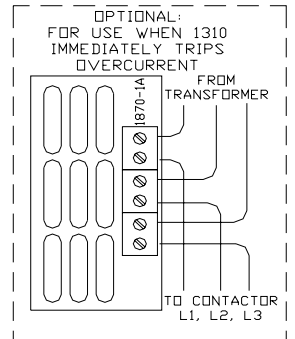
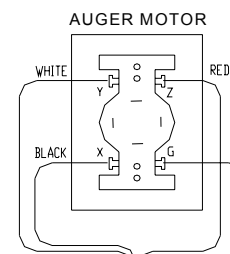
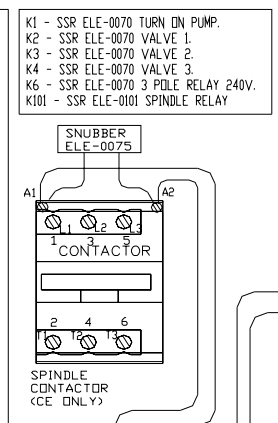
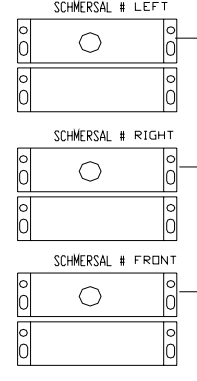
- J1**
 1. 120 VAC (INPUT)
 2. PUMP
 3. VALVE #1
 4. VALVE #2
 5. VALVE #3
 6. 120 RETURN (INPUT)
 7. E-STOP (INPUT)
 8. CONTACTOR FOR AUGER
 9. CONTACTOR FOR SPINDLE
 10. RETURN FOR SPINDLE CONTACTOR
 11. RETURN FOR AUGER CONTACTOR AND PUMP STARTER
 12. RETURN FOR VALVE COILS
- J2**
 - 1-3. AUGER MOTOR
 - 4-7. 220 VAC
- J3**
 1. START/STOP BUTTON
 2. MODE SWITCH
 3. M-FUNCTION INPUT
 5. POT
 6. +5V FOR POT
 7. GROUND
 8. EXTERNAL RESET
 9. +5V
 11. +5V (INPUT)
 12. GROUND (INPUT)
 13. EXTERNAL SLIDE HOLD INPUT
 14. GROUND FOR EXTERNAL SLIDE HOLD
- J4**
 1. LEFT DOOR SWITCH (BLK)
 2. LEFT DOOR SWITCH (WHT)
 3. LEFT DOOR SWITCH (RED)
 4. LEFT DOOR SWITCH (GRN)
 5. RIGHT DOOR SWITCH (BLK)
 6. RIGHT DOOR SWITCH (WHT)
 7. RIGHT DOOR SWITCH (RED)
 8. RIGHT DOOR SWITCH (GRN)
 9. FRONT DOOR SWITCH (BLK)
 10. FRONT DOOR SWITCH (WHT)
 11. FRONT DOOR SWITCH (RED)
 12. FRONT DOOR SWITCH (GRN)



Wrg_0693J_auger_washdown_wiring_diagram

1310 PIN LIST

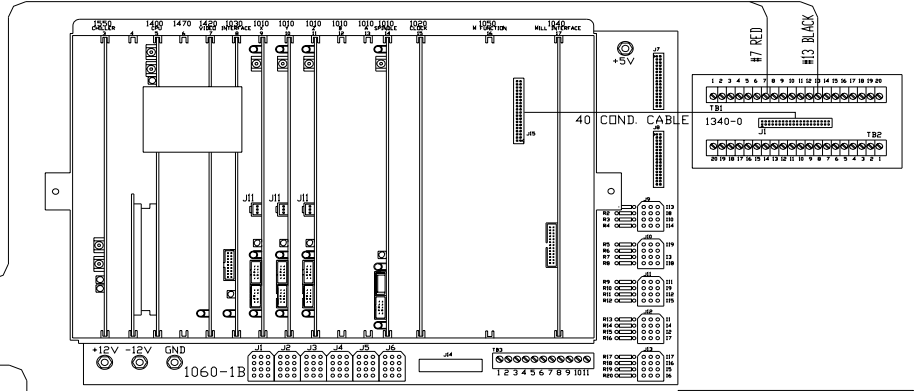
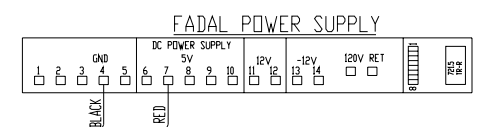
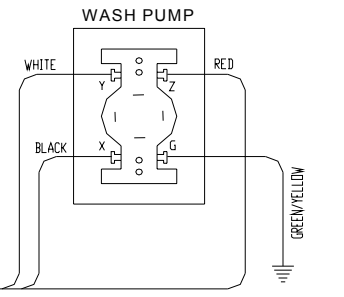
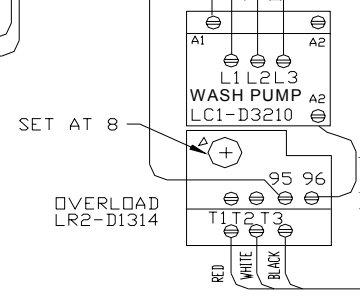
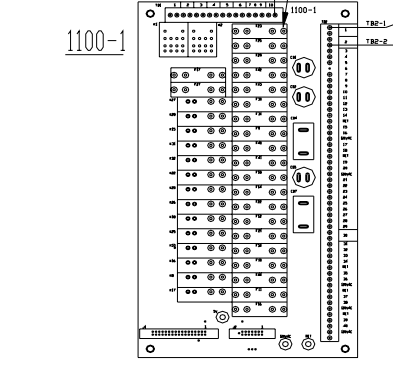
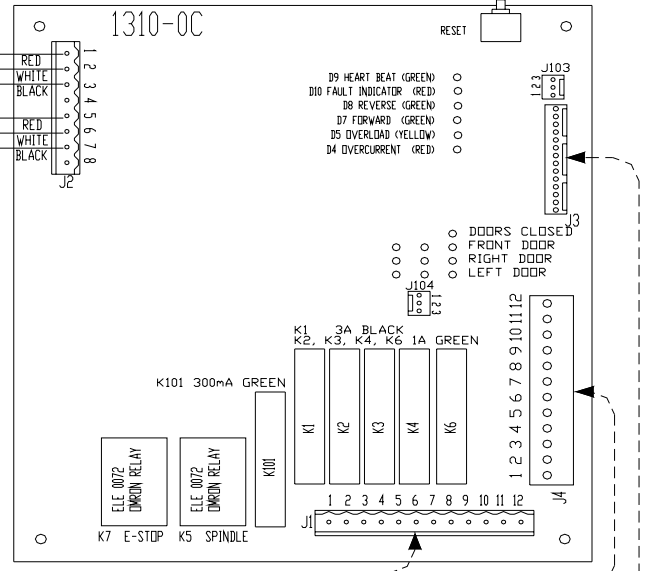
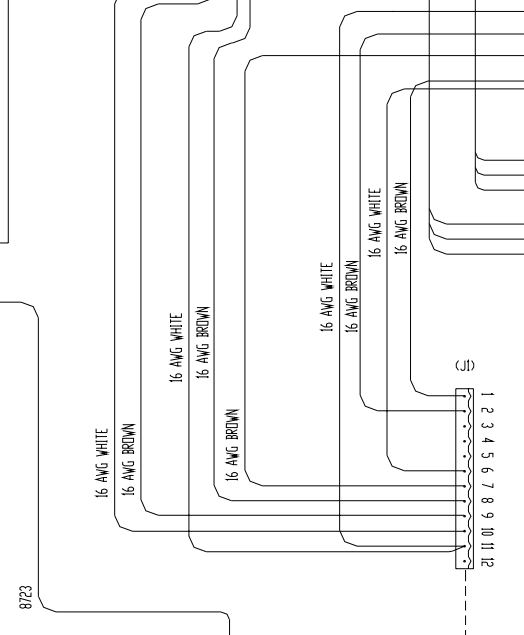
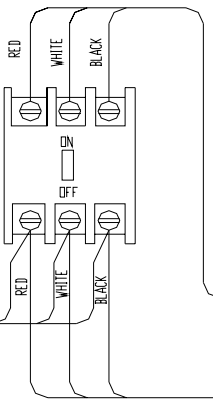
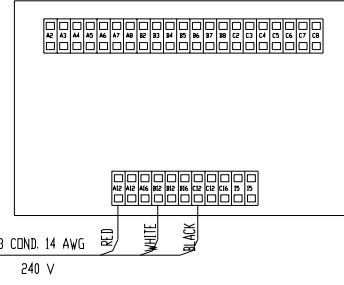
- J1**
 - 120 VAC (INPUT)
 - PUMP
 - VALVE #1
 - VALVE #2
 - VALVE #3
 - 120 RETURN (INPUT)
 - E-STOP (INPUT)
 - CONTACTOR FOR AUGER
 - CONTACTOR FOR SPINDLE
 - RETURN FOR SPINDLE CONTACTOR
 - RETURN FOR AUGER CONTACTOR
 - AND PUMP STARTER
 - RETURN FOR VALVE COILS
- J2**
 - 1-3. AUGER MOTOR
 - 4-7. 220 VAC
- J3**
 - START/STOP BUTTON
 - MODE SWITCH
 - M-FUNCTION INPUT
 - POT
 - +5V FOR POT
 - GROUND
 - EXTERNAL RESET
 - +5V
 - +5V (INPUT)
 - GROUND (INPUT)
 - EXTERNAL SLIDE HOLD OUTPUT
 - GROUND FOR EXTERNAL SLIDE HOLD
- J4**
 - LEFT DOOR SWITCH (BLK)
 - LEFT DOOR SWITCH (WHT)
 - LEFT DOOR SWITCH (RED)
 - LEFT DOOR SWITCH (GRN)
 - RIGHT DOOR SWITCH (BLK)
 - RIGHT DOOR SWITCH (WHT)
 - RIGHT DOOR SWITCH (RED)
 - RIGHT DOOR SWITCH (GRN)
 - FRONT DOOR SWITCH (BLK)
 - FRONT DOOR SWITCH (WHT)
 - FRONT DOOR SWITCH (RED)
 - FRONT DOOR SWITCH (GRN)



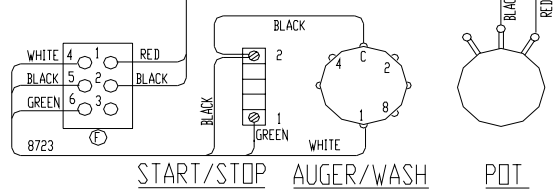
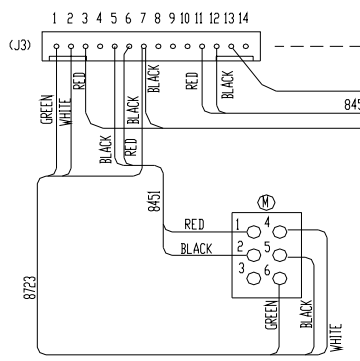
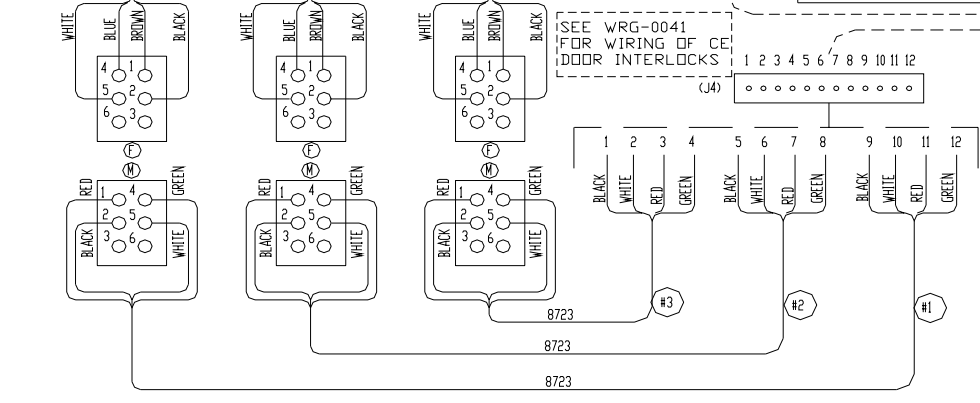
CIRCUIT BREAKER 15A 00U315 (IF MORE THAN 15A IS REQUIRED BECAUSE DATC, PALLET CHANGER, AND COOLANT THRU ARE ADDED, THEN A SECOND CIRCUIT BREAKER WILL BE NEEDED.)

NOTE: IF MACHINE HAS COOLANT THRU, SEE WRG-0037. IF MACHINE HAS COOLANT THRU, DATC, AND PALLET CHANGER, A SECOND 15 A CIRCUIT BREAKER WILL BE NEEDED.)

T-820 TRANSFORMER



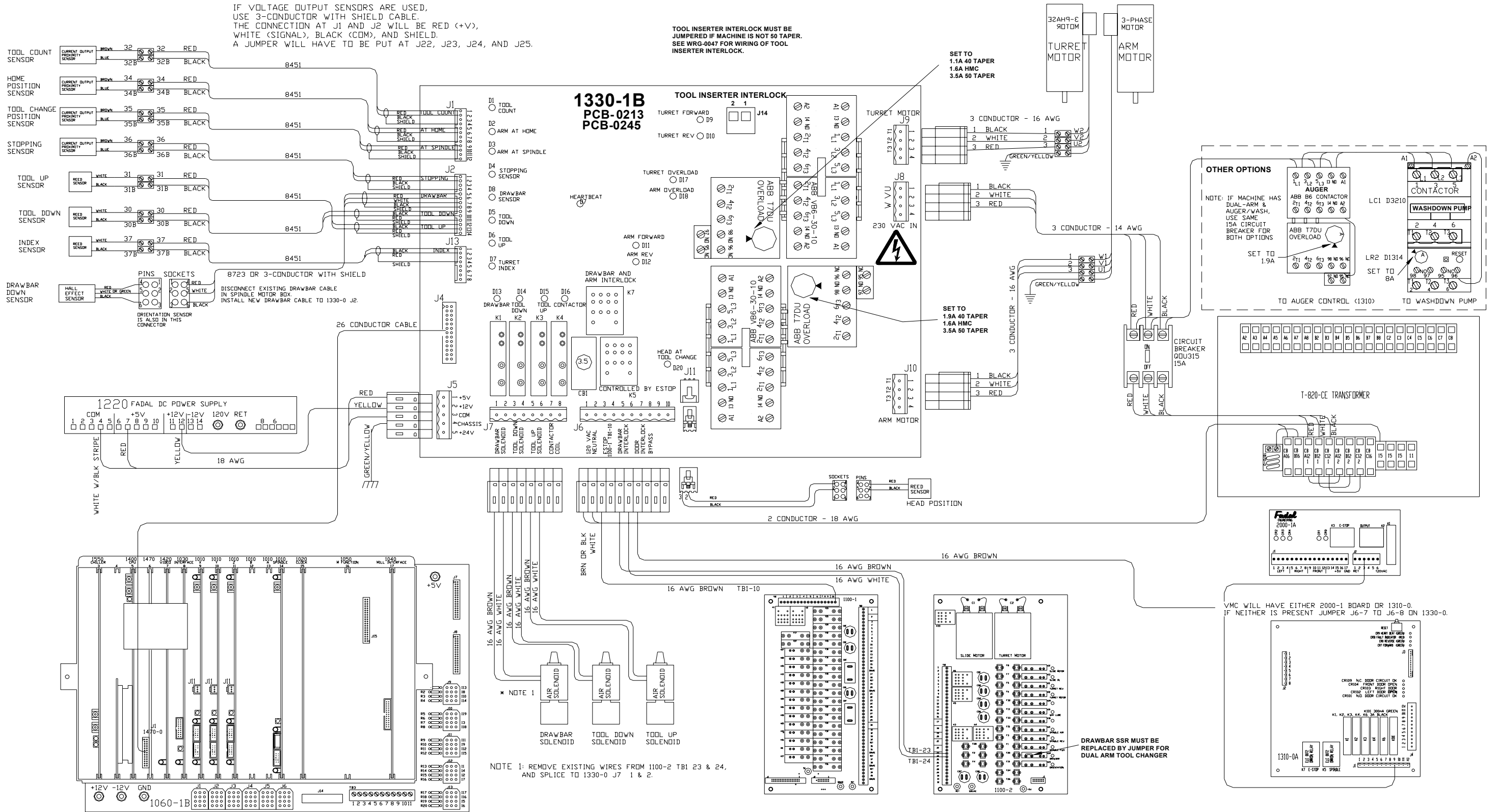
NOTE: REMOVE DOOR INTERLOCK FROM J13 PIN 8 & INSTALL AUGER INTERLOCK



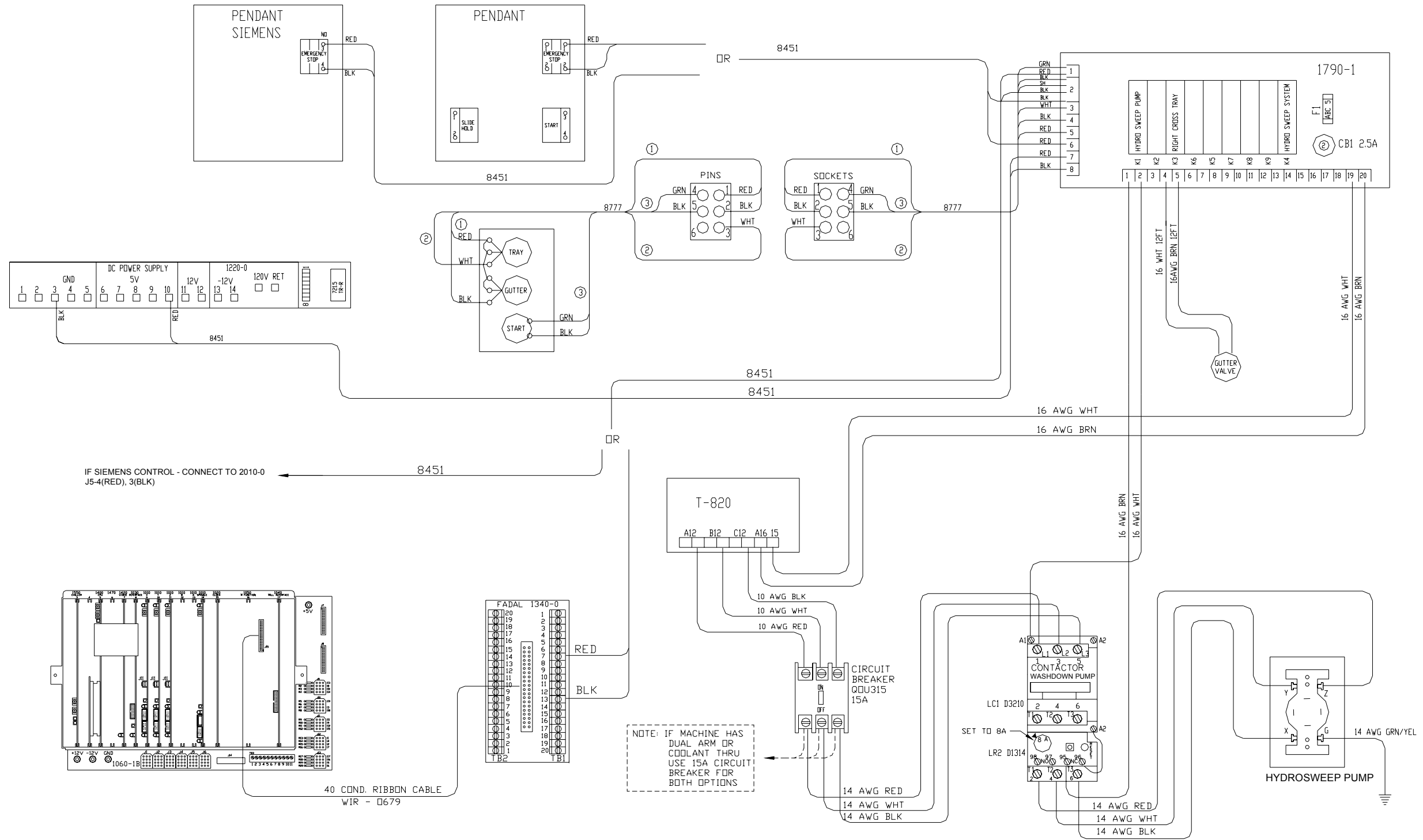
WRG_0001K_Dual_Arm_Tool_Changer_1330-1

IF VOLTAGE OUTPUT SENSORS ARE USED,
USE 3-CONDUCTOR WITH SHIELD CABLE.
THE CONNECTION AT J1 AND J2 WILL BE RED (+V),
WHITE (SIGNAL), BLACK (COM), AND SHIELD.
A JUMPER WILL HAVE TO BE PUT AT J22, J23, J24, AND J25.

TOOL INSERTER INTERLOCK MUST BE
JUMPERED IF MACHINE IS NOT 50 TAPER.
SEE WRG-0047 FOR WIRING OF TOOL
INSERTER INTERLOCK.

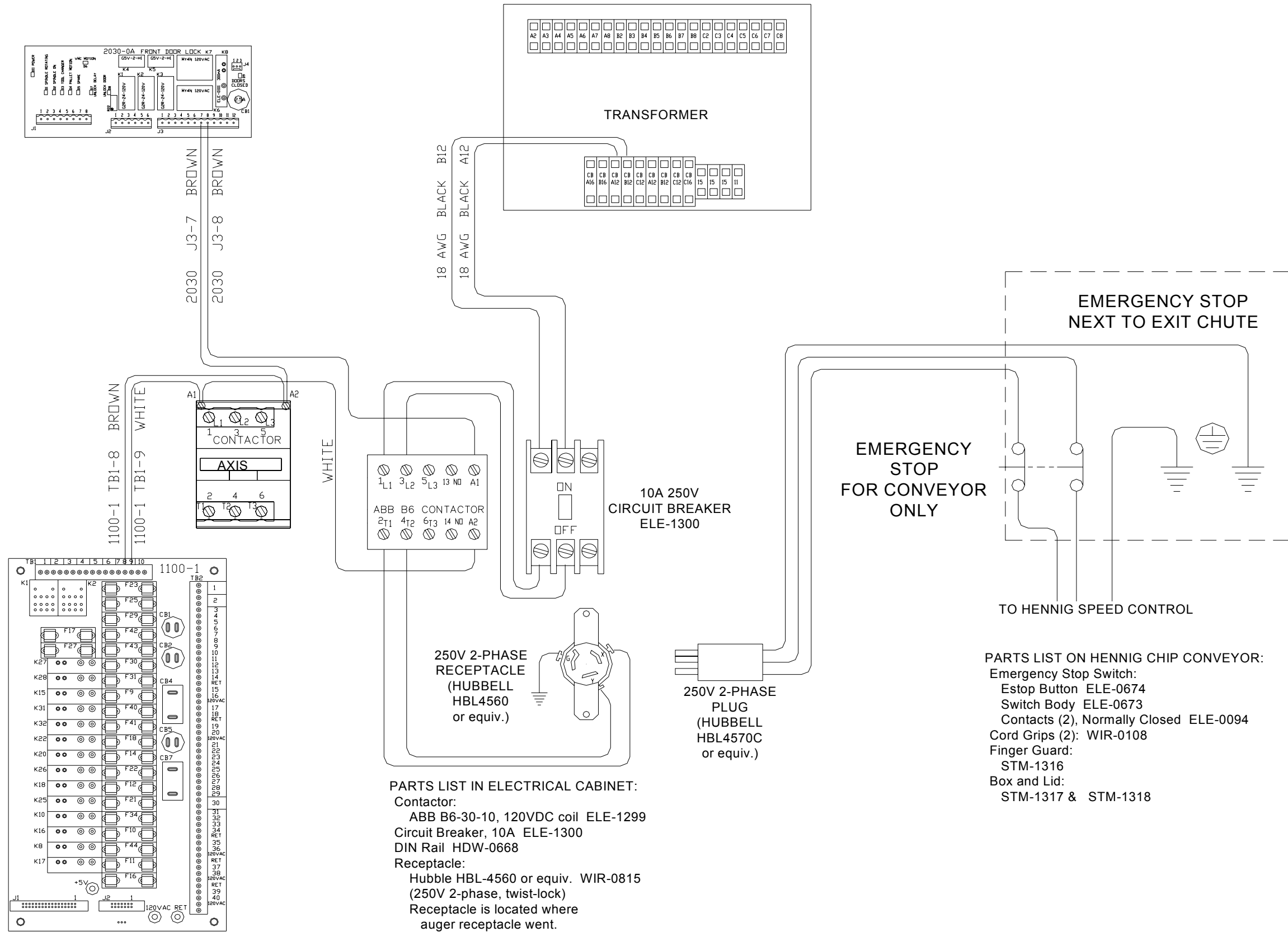


WRG_0044D_6535_washdown



NOTE: INSTALL EPROM VERSION 5.4 ON 1790-1 BOARD.

WRG_0045B_CE_wiring_Hennig_Chip_Conveyor

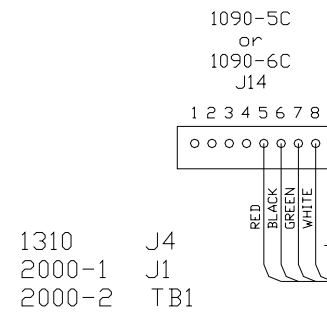
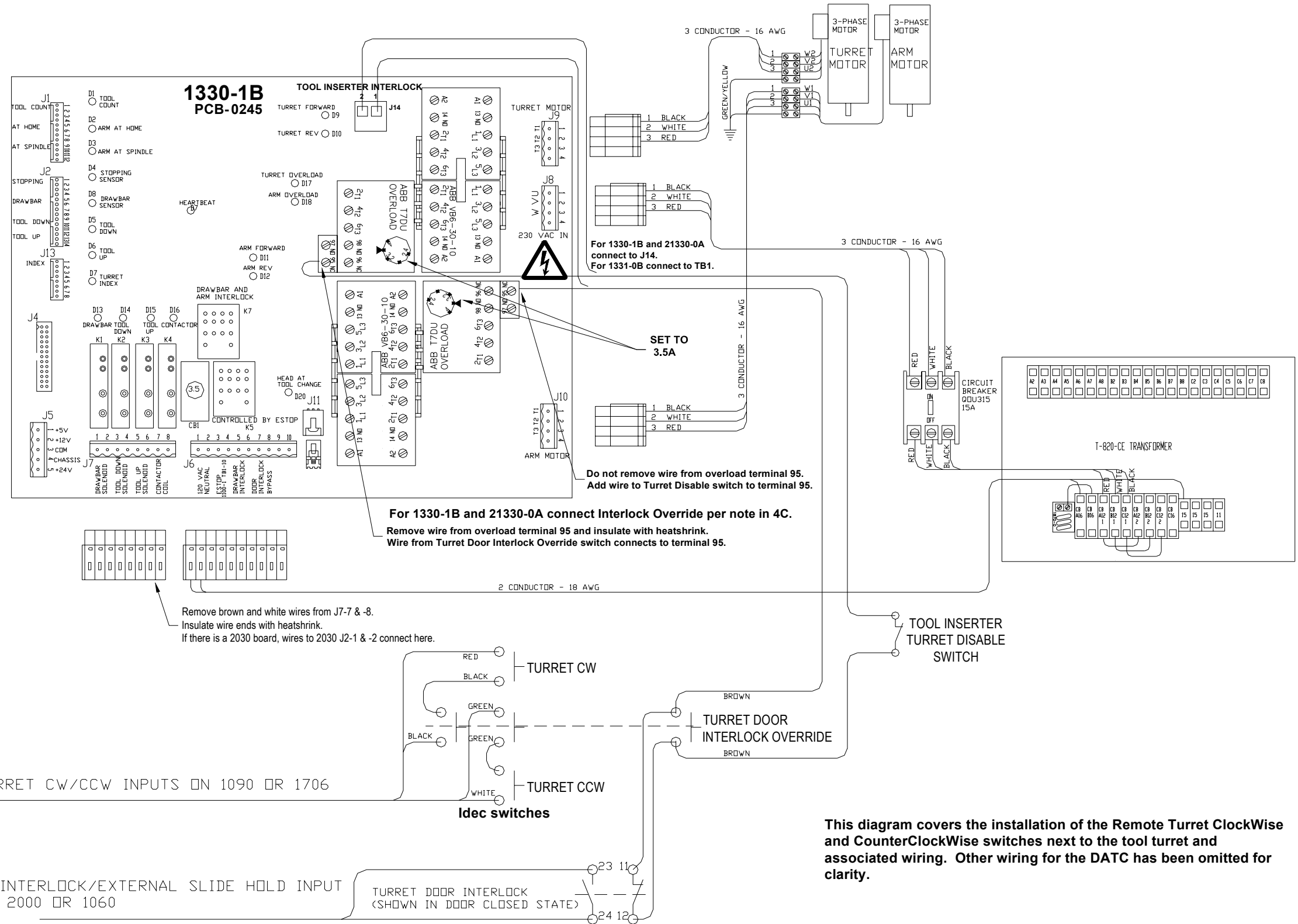
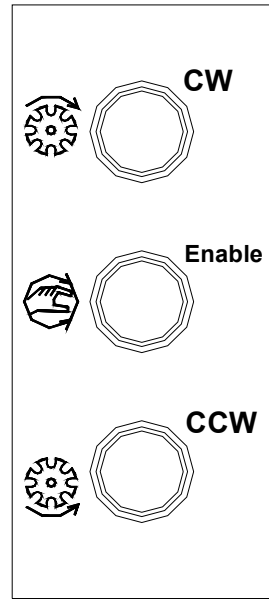


- PARTS LIST IN ELECTRICAL CABINET:**
- Contactor: ABB B6-30-10, 120VDC coil ELE-1299
 - Circuit Breaker, 10A ELE-1300
 - DIN Rail HDW-0668
 - Receptacle: Hubbell HBL-4560 or equiv. WIR-0815 (250V 2-phase, twist-lock)
 - Receptacle is located where auger receptacle went.

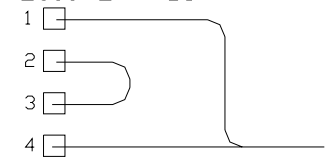
- PARTS LIST ON HENNIG CHIP CONVEYOR:**
- Emergency Stop Switch:
 - Estop Button ELE-0674
 - Switch Body ELE-0673
 - Contacts (2), Normally Closed ELE-0094
 - Cord Grips (2): WIR-0108
 - Finger Guard: STM-1316
 - Box and Lid: STM-1317 & STM-1318

WRG_0047F_Remote_TurCW_TurCCW_for_50_Taper

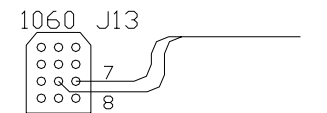
FACEPLATE FOR SWITCHES



TO REMOTE TURRET CW/CCW INPUTS ON 1090 OR 1706



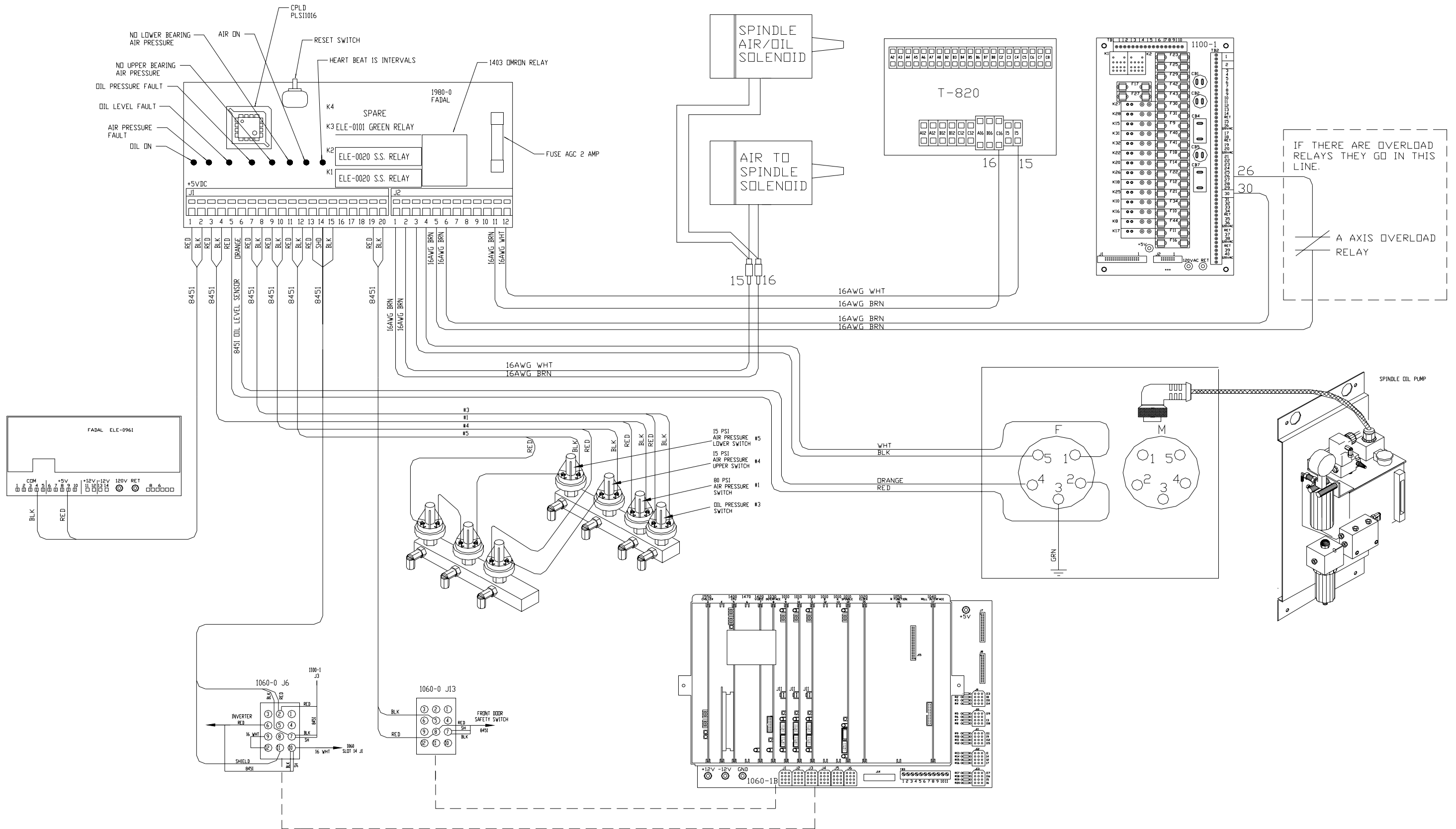
TO DOOR INTERLOCK/EXTERNAL SLIDE HOLD INPUT ON 1310, 2000 OR 1060



This diagram covers the installation of the Remote Turret ClockWise and CounterClockWise switches next to the tool turret and associated wiring. Other wiring for the DATC has been omitted for clarity.

Interlock switch:
Pizzato FR692-D1,
Omron D4DS-35FS,
or equivalent

Wrg_0050A_air_oil_system_50tap



Wrg_0051A_15_pin_connector_50tap

