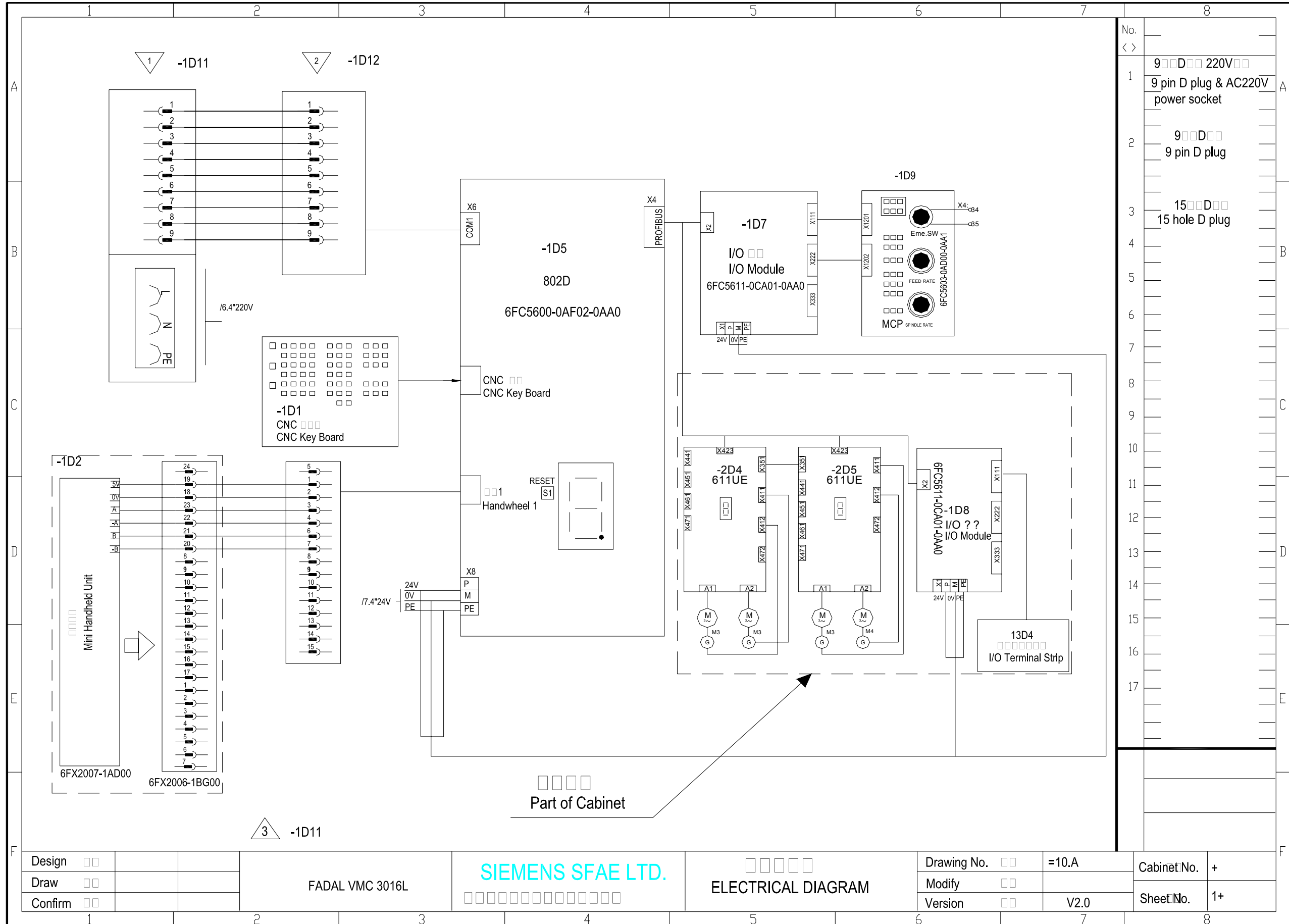
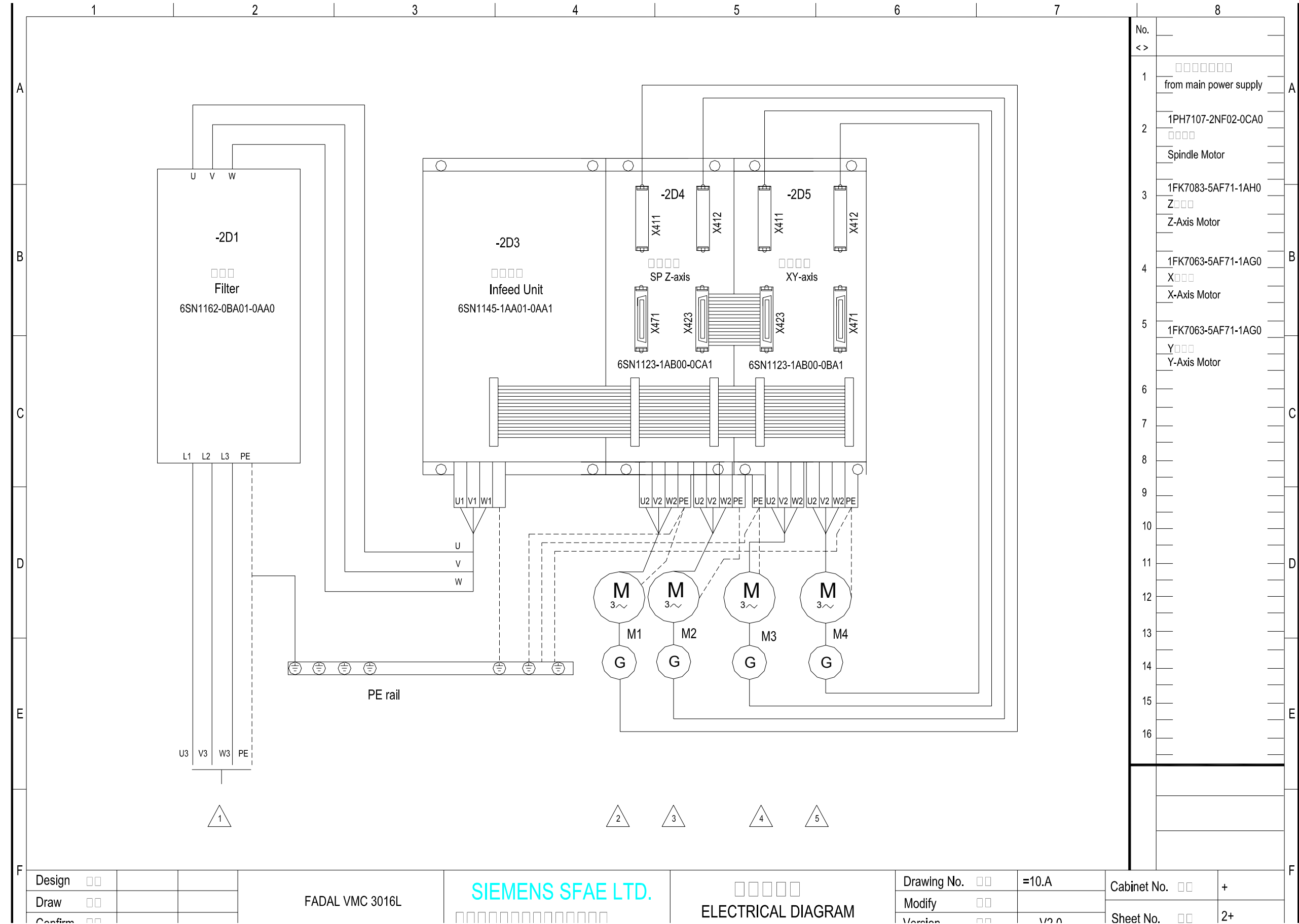


SECTION 14

3016 Siemens 802D





Design	<input type="checkbox"/>	
Draw	<input type="checkbox"/>	
Confirm	<input type="checkbox"/>	

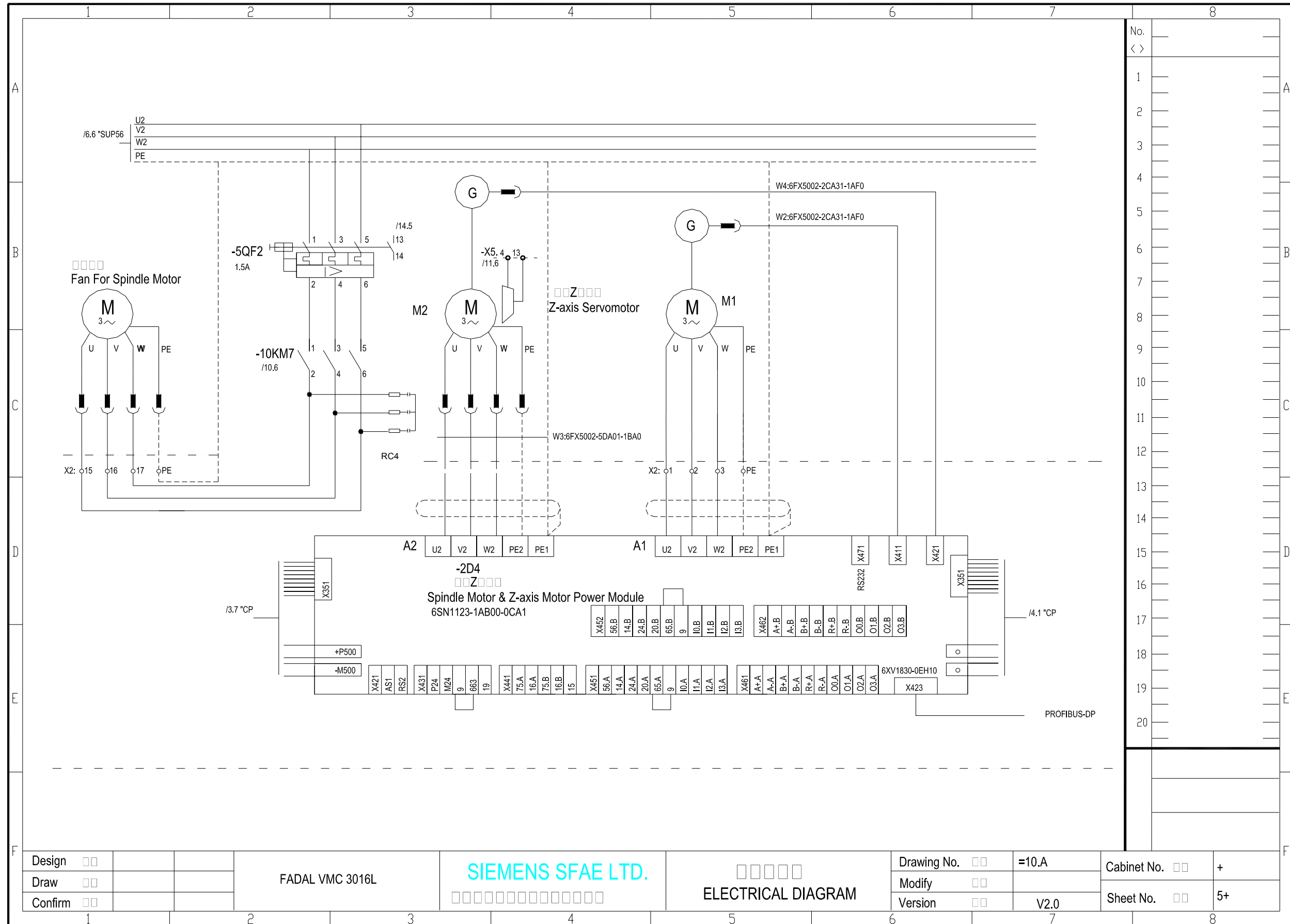
FADAL VMC 3016L

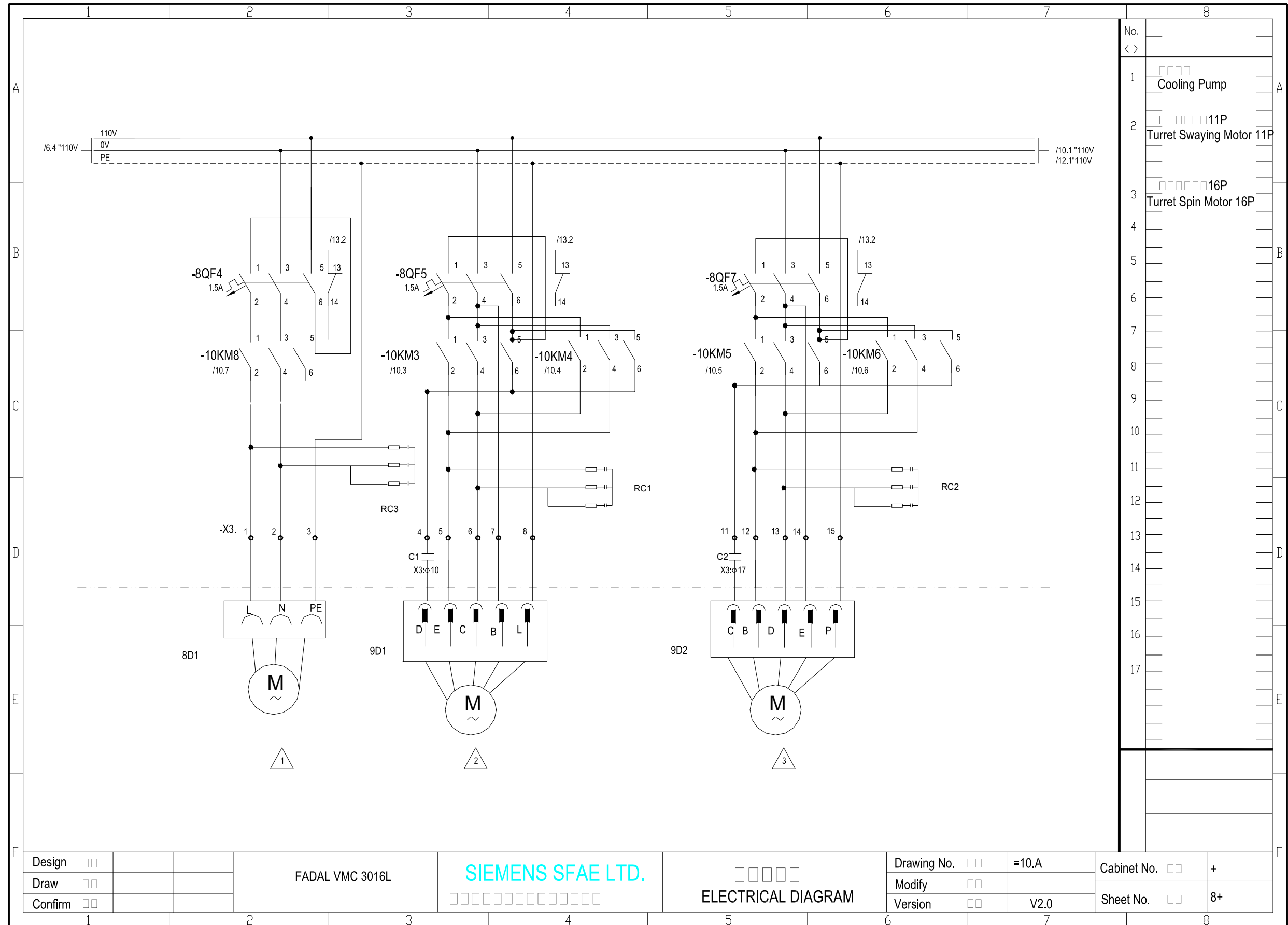
SIEMENS SFAE LTD.

ELECTRICAL DIAGRAM

Drawing No.	<input type="checkbox"/>	=10.A
Modify	<input type="checkbox"/>	
Version	<input type="checkbox"/>	v2.0

Cabinet No.	<input type="checkbox"/>	+
Sheet No.	<input type="checkbox"/>	2+





Design □□
 Draw □□
 Confirm □□

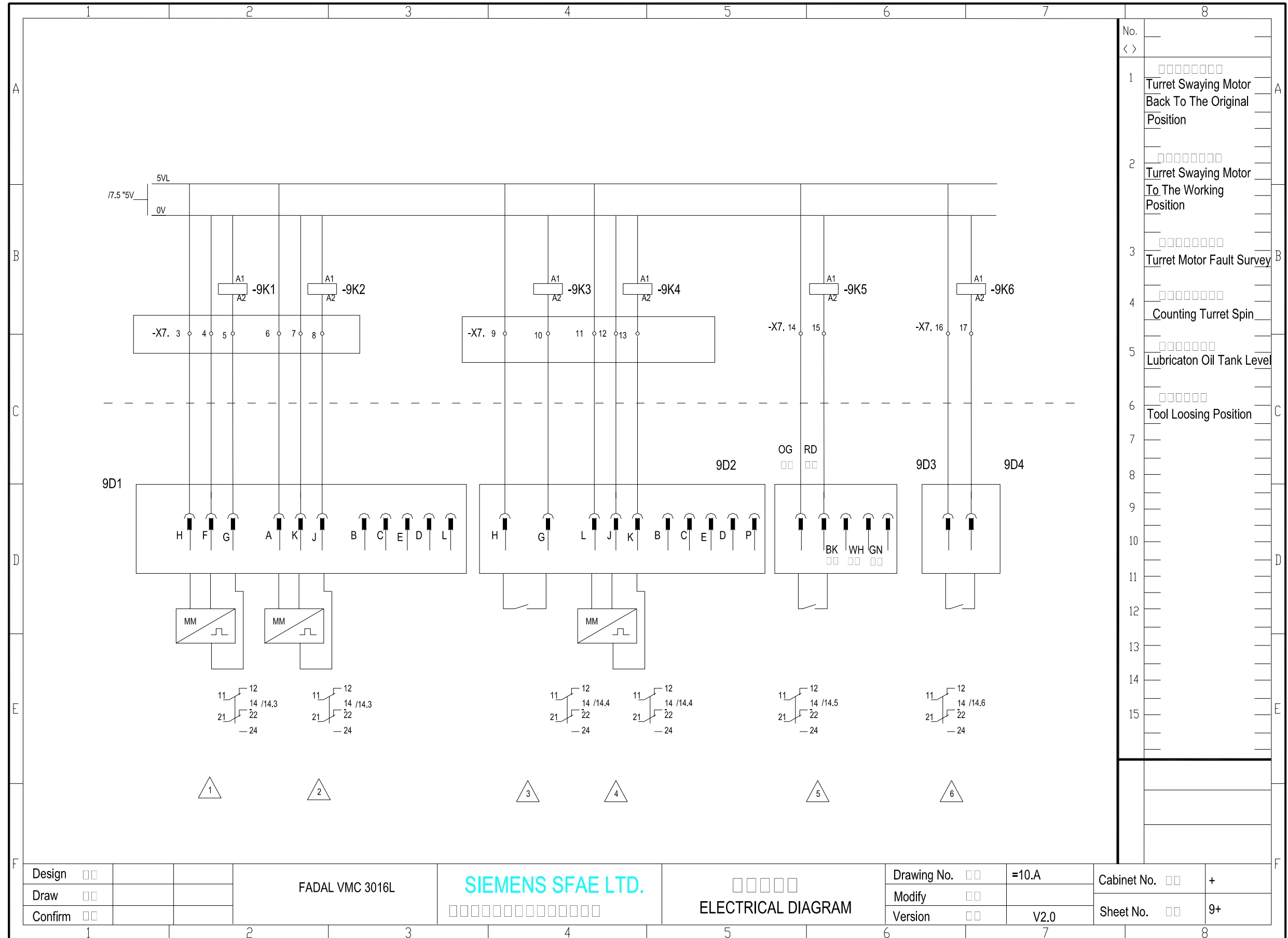
FADAL VMC 3016L

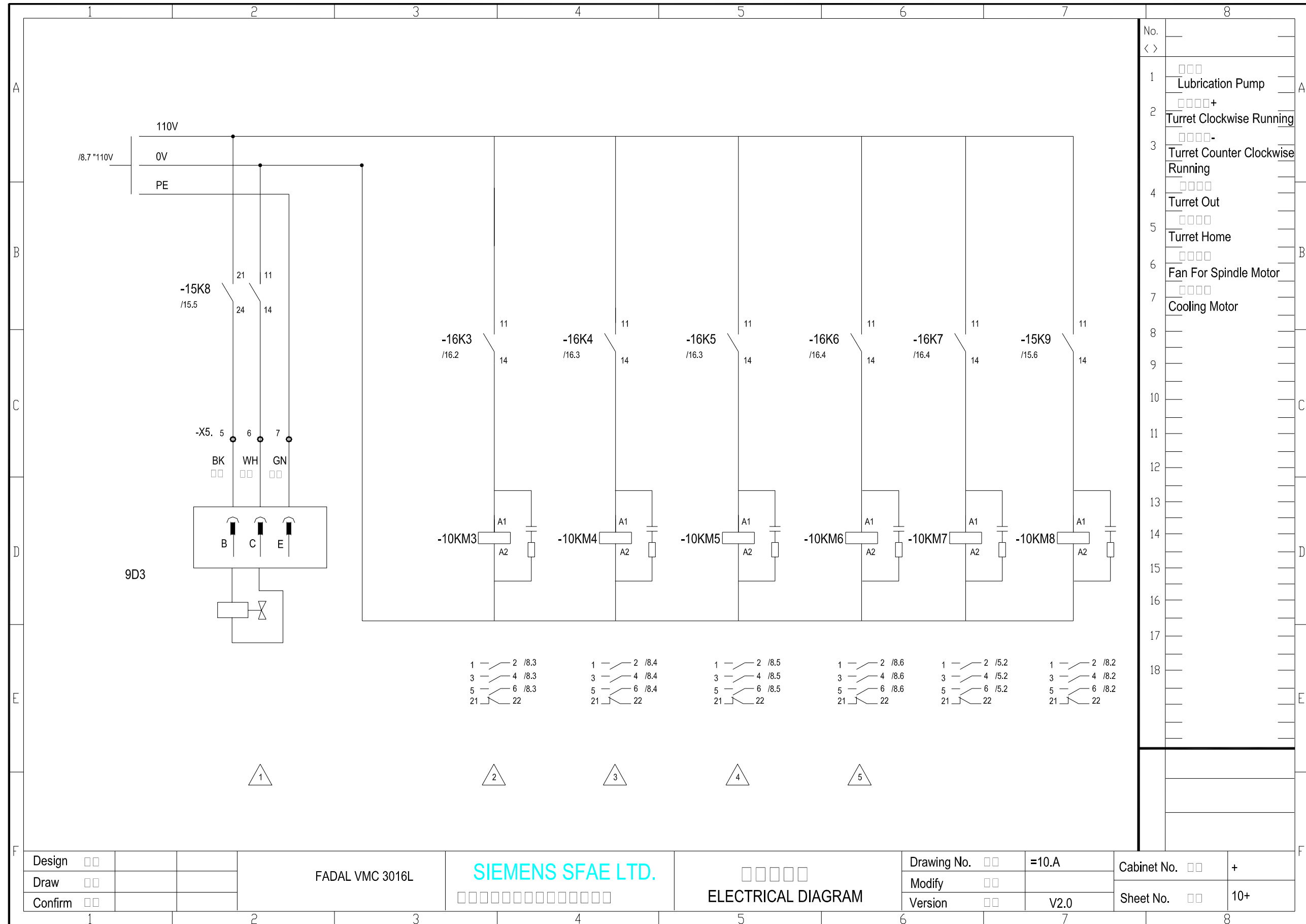
SIEMENS SFAE LTD.

□□□□□
 ELECTRICAL DIAGRAM

Drawing No. □□ =10.A
 Modify □□
 Version □□ V2.0

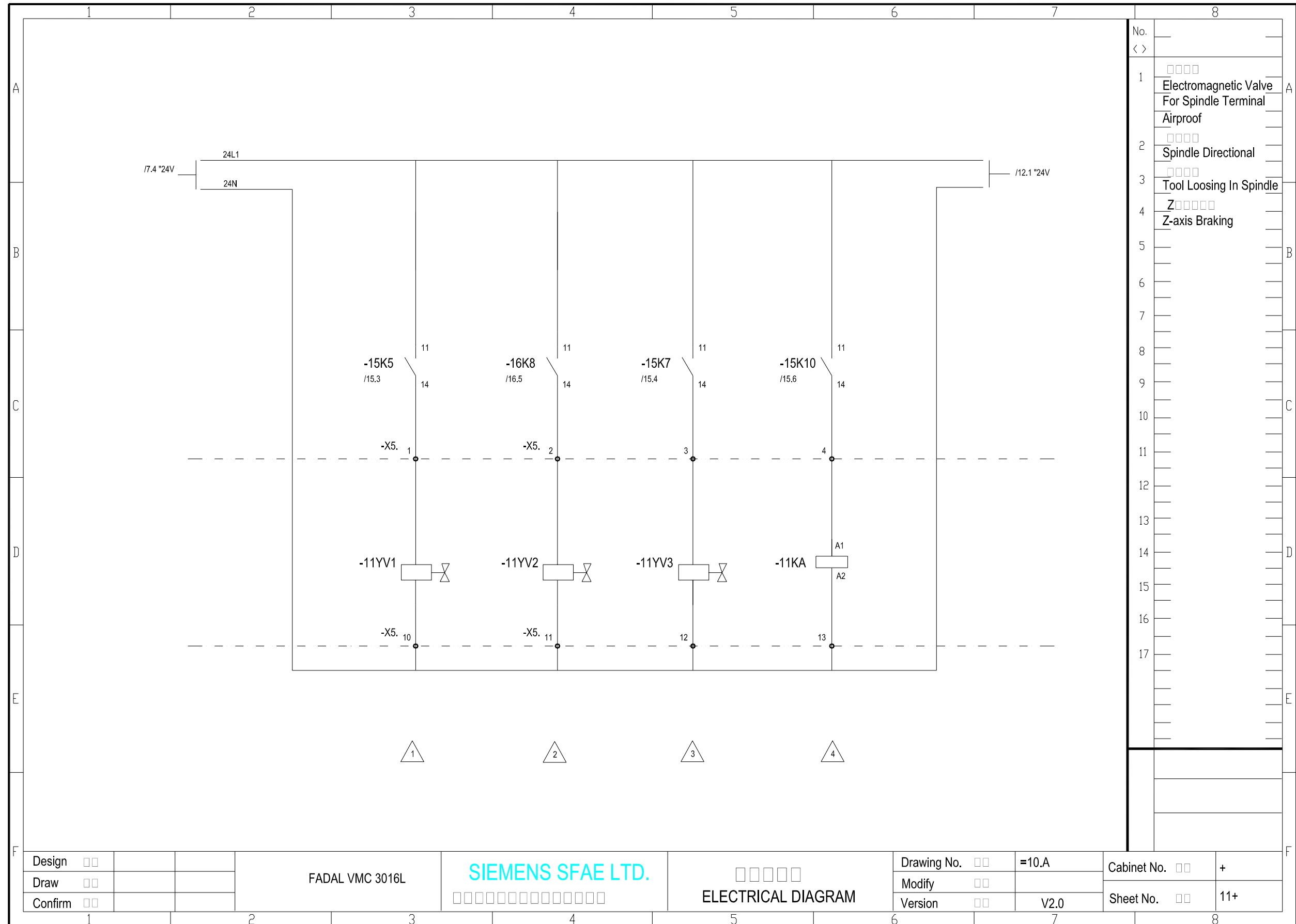
Cabinet No. □□ +
 Sheet No. □□ 8+



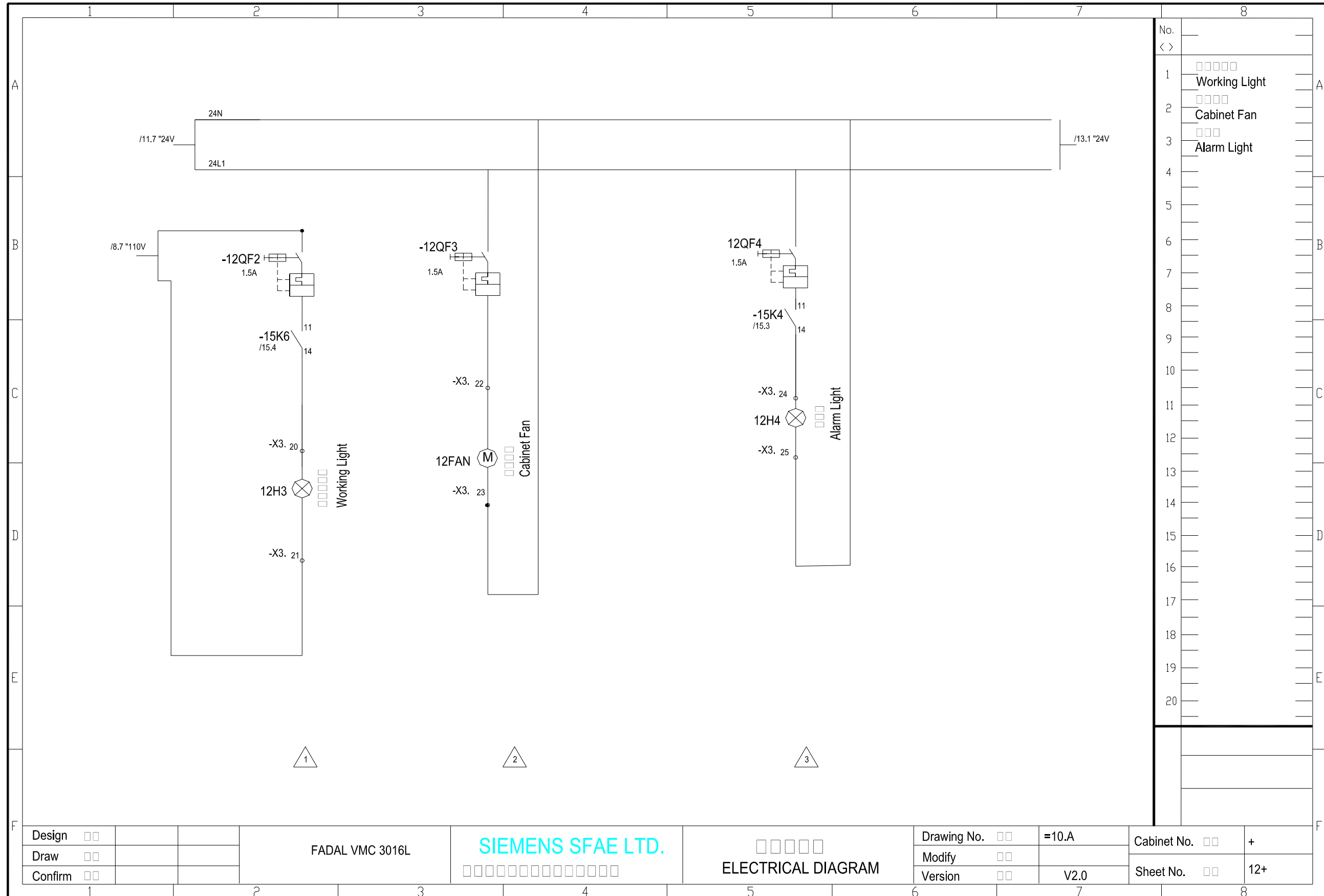


No.	<	>
1	□□□	Lubrication Pump
2	□□□□+	Turret Clockwise Running
3	□□□□-	Turret Counter Clockwise Running
4	□□□□	Turret Out
5	□□□□	Turret Home
6	□□□□	Fan For Spindle Motor
7	□□□□	Cooling Motor
8		
9		
10		
11		
12		
13		
14		
15		
16		
17		
18		

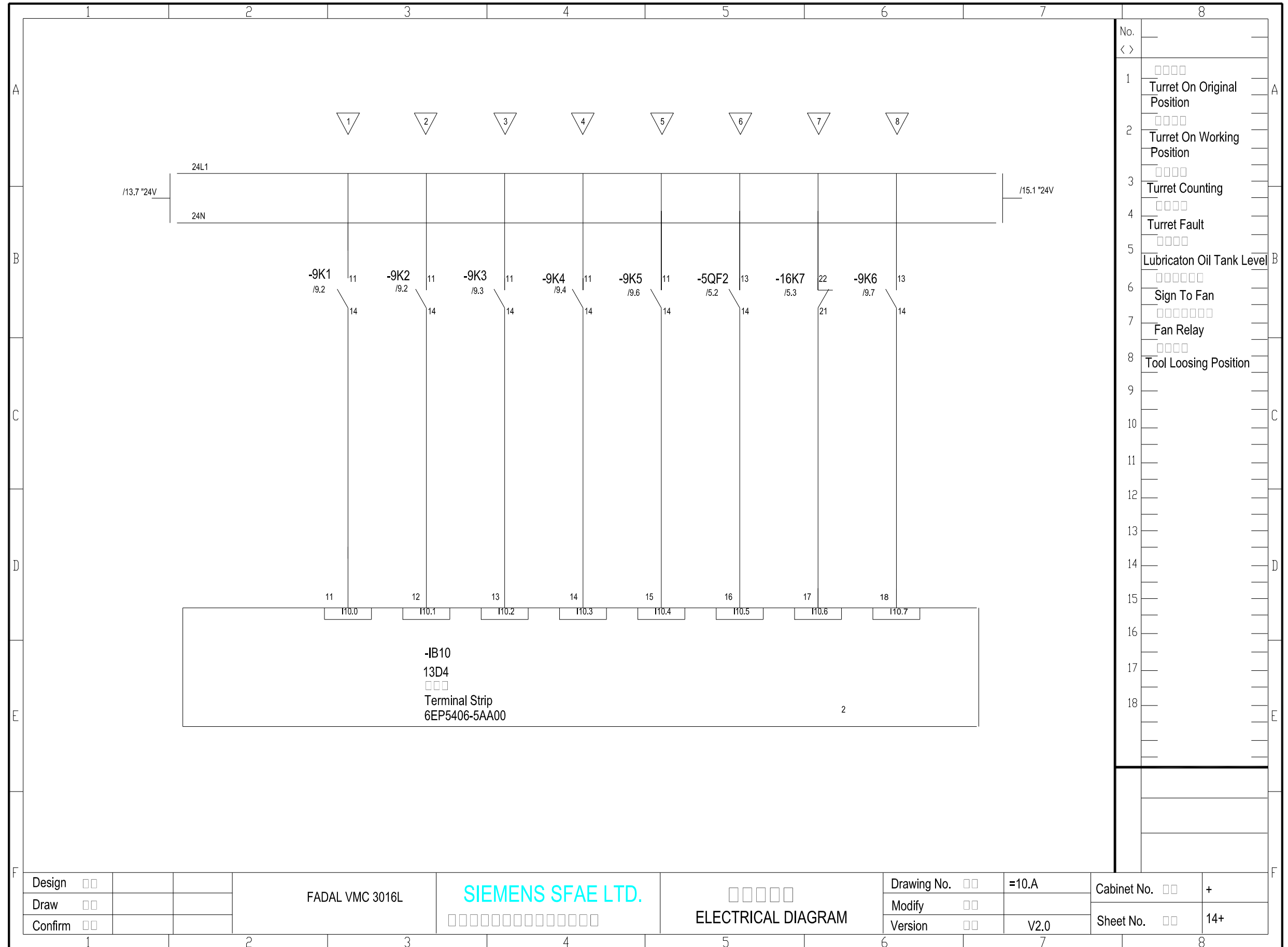
Design	□□			FADAL VMC 3016L	SIEMENS SFAE LTD.	□□□□□	Drawing No.	□□	=10.A	Cabinet No.	□□	+
Draw	□□				□□□□□□□□□□□□□□	ELECTRICAL DIAGRAM	Modify	□□		Sheet No.	□□	10+
Confirm	□□						Version	□□	V2.0			



Design	□□			FADAL VMC 3016L	SIEMENS SFAE LTD.	□□□□□□	Drawing No.	□□	=10.A	Cabinet No.	□□	+
Draw	□□						Modify	□□		Sheet No.	□□	11+
Confirm	□□						Version	□□	V2.0			

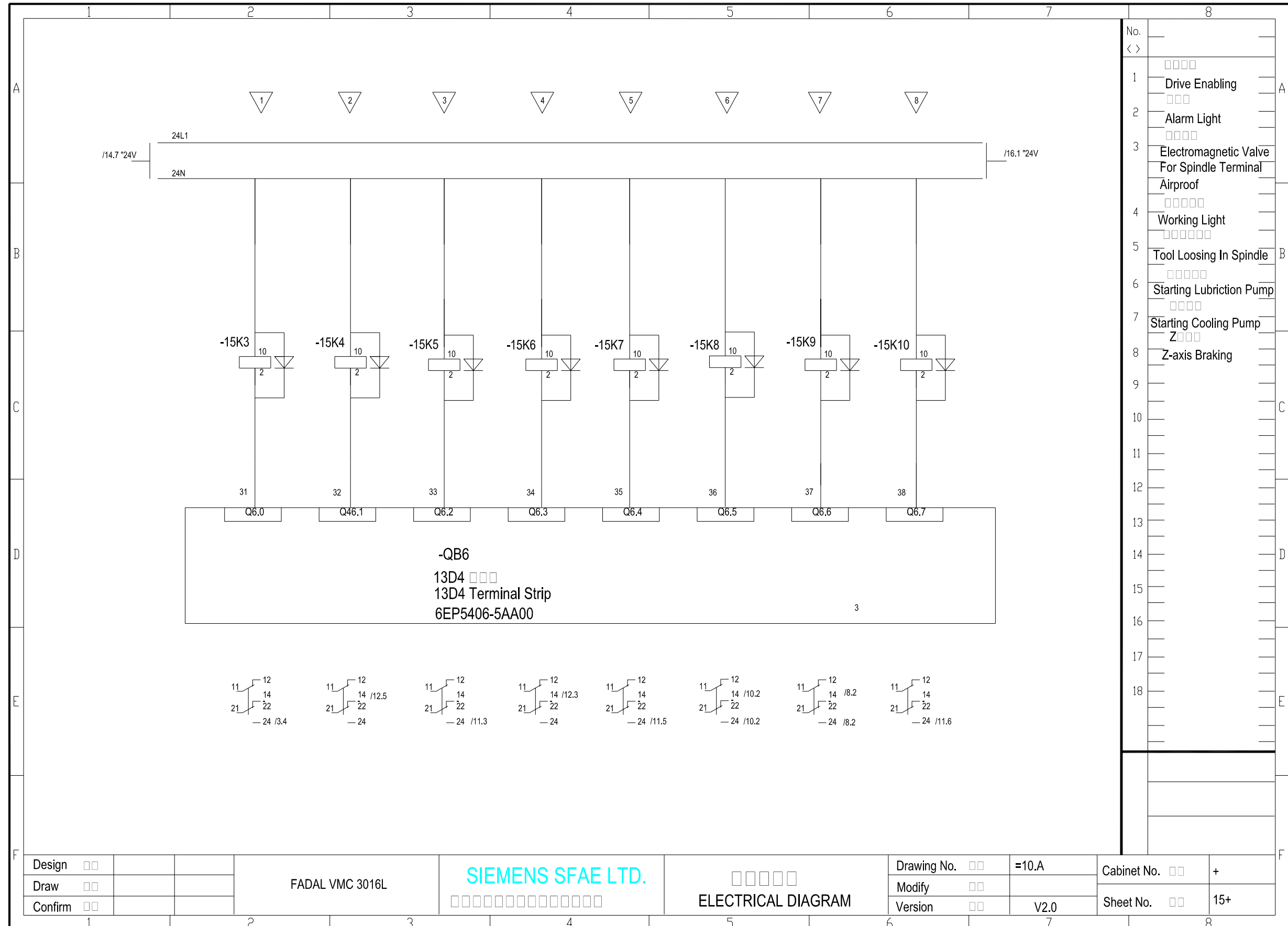


Design	□□			FADAL VMC 3016L	SIEMENS SFAE LTD.	□□□□□ ELECTRICAL DIAGRAM	Drawing No. □□ =10.A	Cabinet No. □□ +
Draw	□□						Modify □□	Sheet No. □□ 12+
Confirm	□□						Version □□ V2.0	



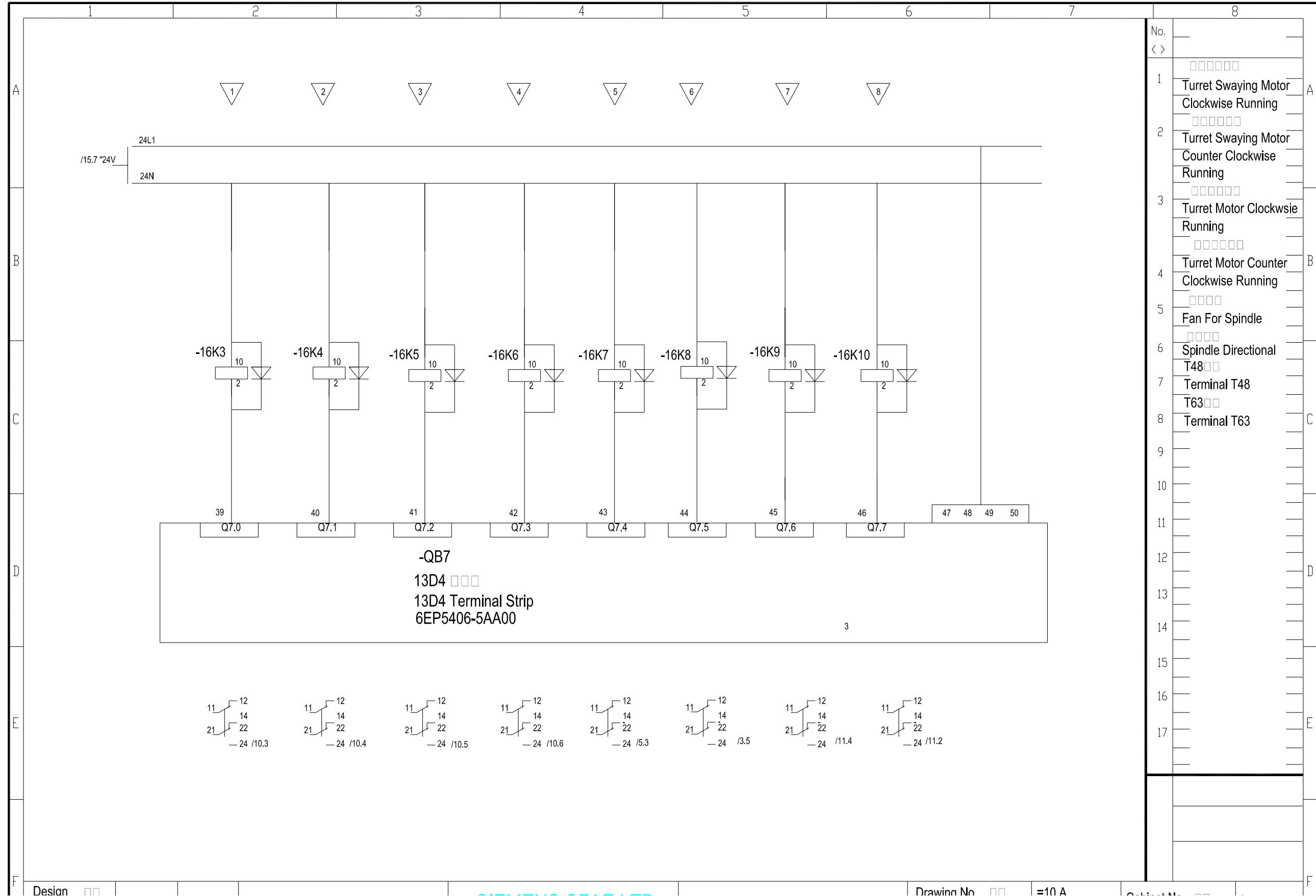
No.	
< >	
1	Turret On Original Position
2	Turret On Working Position
3	Turret Counting
4	Turret Fault
5	Lubricaton Oil Tank Level
6	Sign To Fan
7	Fan Relay
8	Tool Loosing Position
9	
10	
11	
12	
13	
14	
15	
16	
17	
18	

Design	□□			FADAL VMC 3016L	SIEMENS SFAE LTD.	□□□□□	Drawing No.	□□	=10.A	Cabinet No.	□□	+
Draw	□□				□□□□□□□□□□□□□□	ELECTRICAL DIAGRAM	Modify	□□		Sheet No.	□□	14+
Confirm	□□						Version	□□	V2.0			



No.	
< >	
1	□□□□ Drive Enabling
2	□□□ Alarm Light
3	□□□□ Electromagnetic Valve For Spindle Terminal Airproof
4	□□□□□□ Working Light
5	□□□□□□ Tool Loosing In Spindle
6	□□□□□□ Starting Lubrication Pump
7	□□□□ Starting Cooling Pump
8	Z□□□ Z-axis Braking
9	
10	
11	
12	
13	
14	
15	
16	
17	
18	

Design	□□								
Draw	□□								
Confirm	□□								
		FADAL VMC 3016L		SIEMENS SFAE LTD.		□□□□□□ ELECTRICAL DIAGRAM		Drawing No. □□ =10.A	
						Version □□ V2.0		Cabinet No. □□ +	
								Sheet No. □□ 15+	



Design

Drawing No. =10 A

