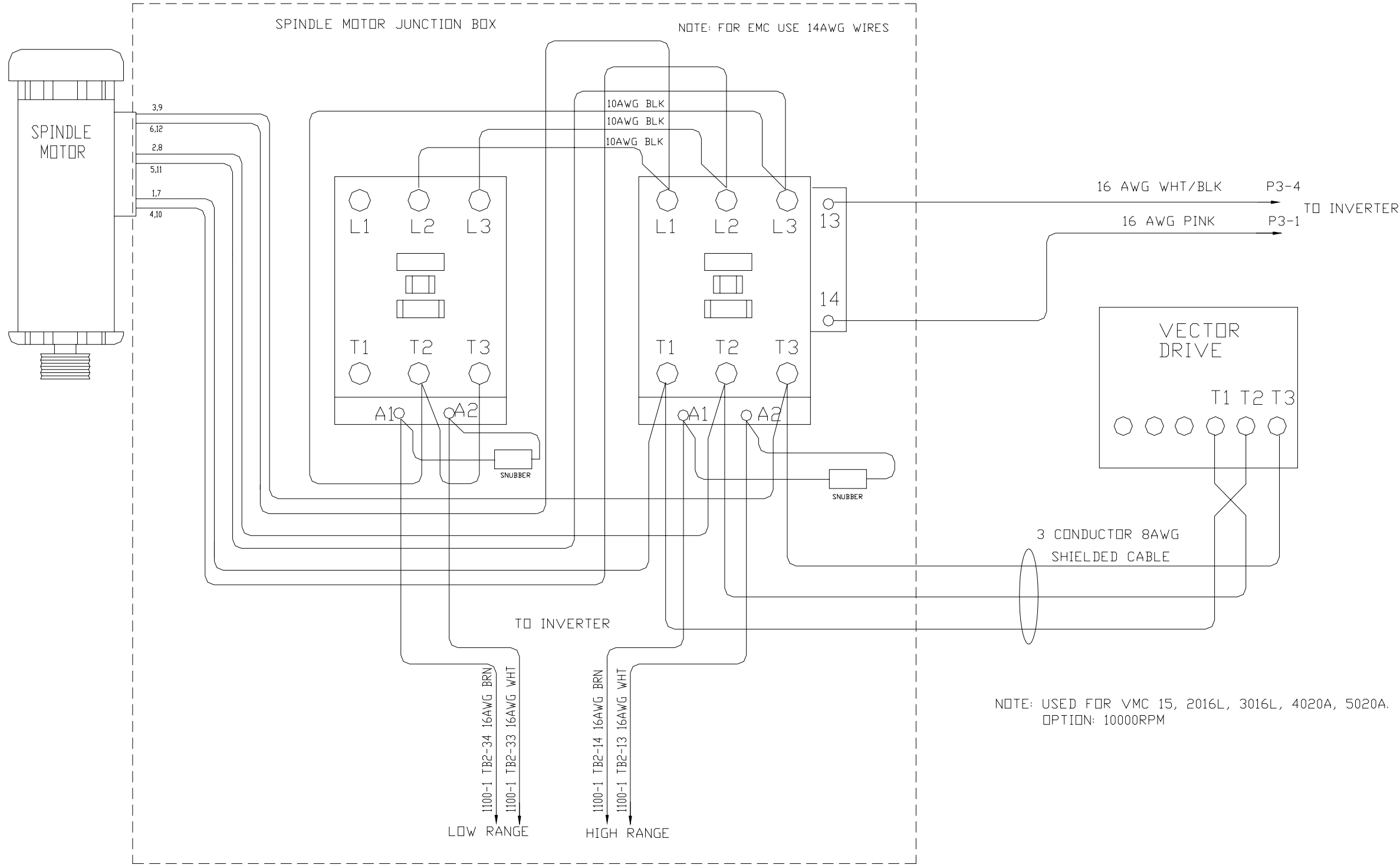


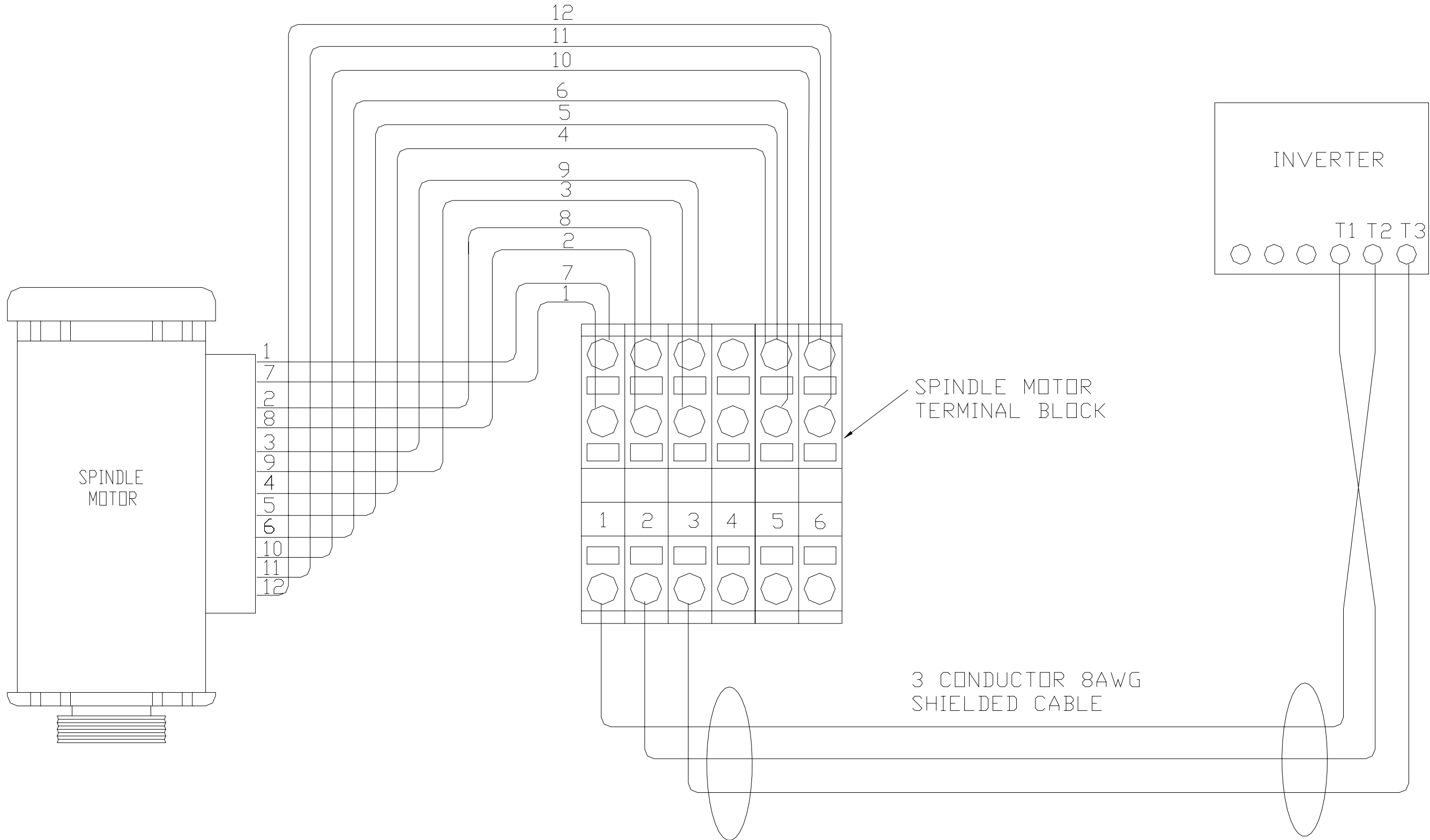
# SECTION 2

## Spindle

WRG\_0023E\_wye\_delta\_contactors

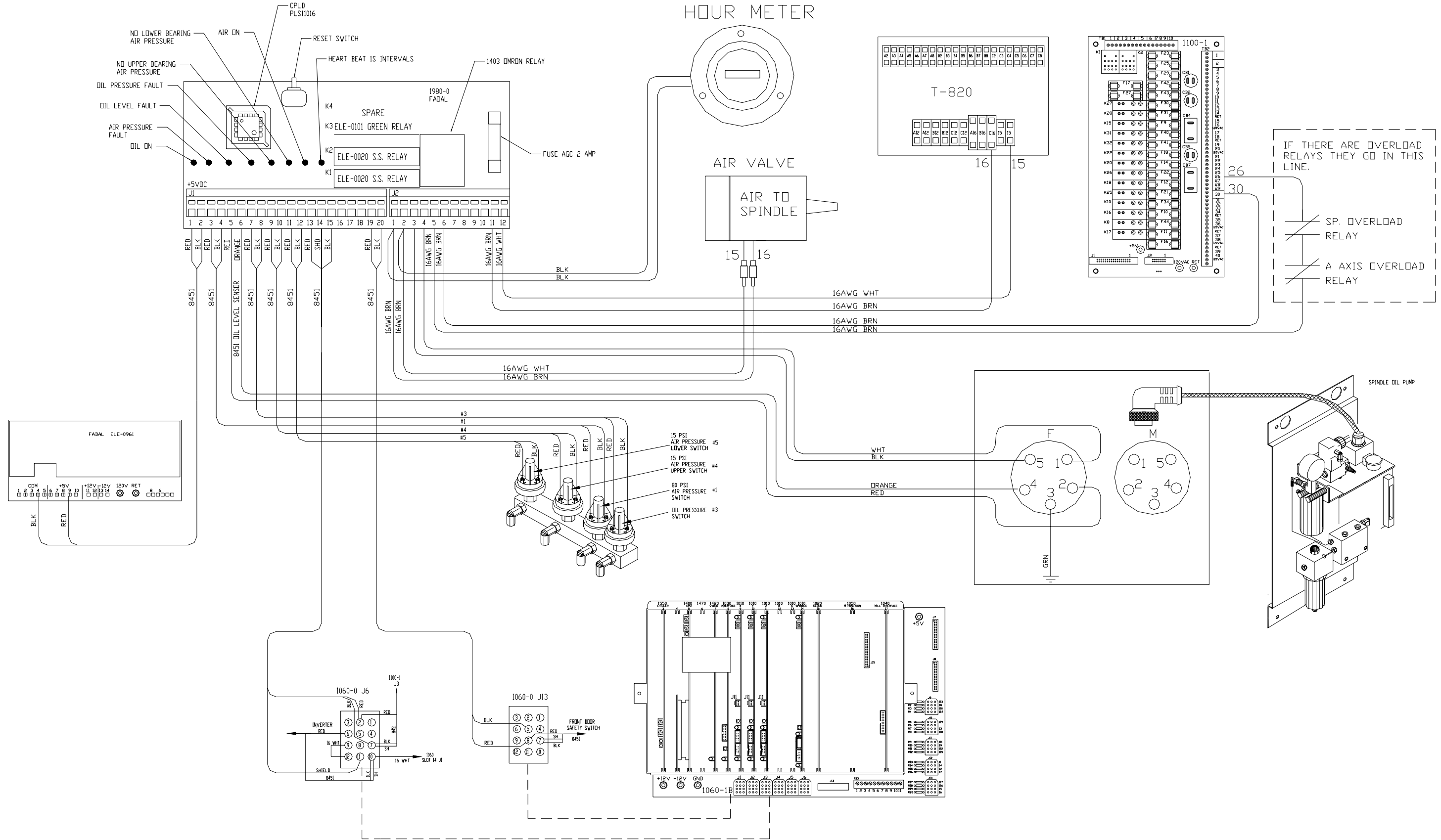


Wrg\_0024A\_spindle\_motor\_connection

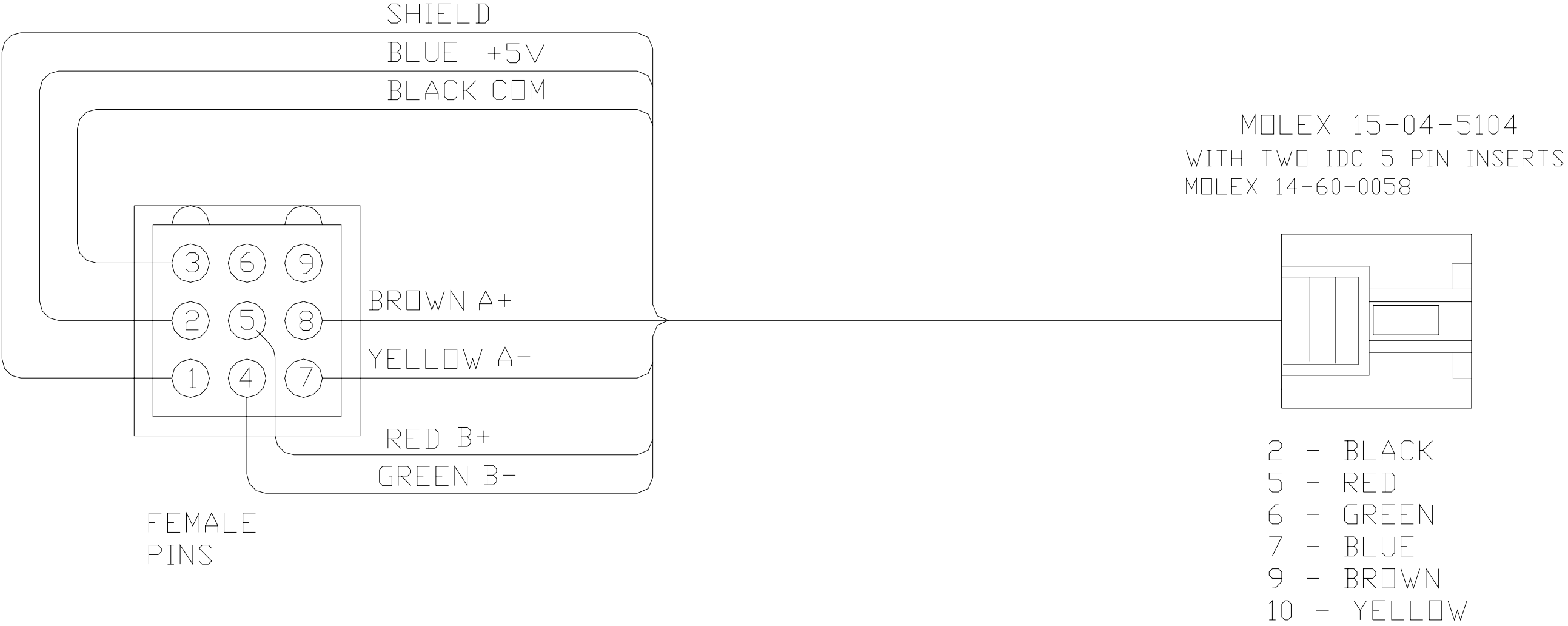


FOR VMC 2216, 3016, 3020, 4020, 6030, 8030.

# Wrg\_0026B\_1980\_0\_15k\_air\_oil



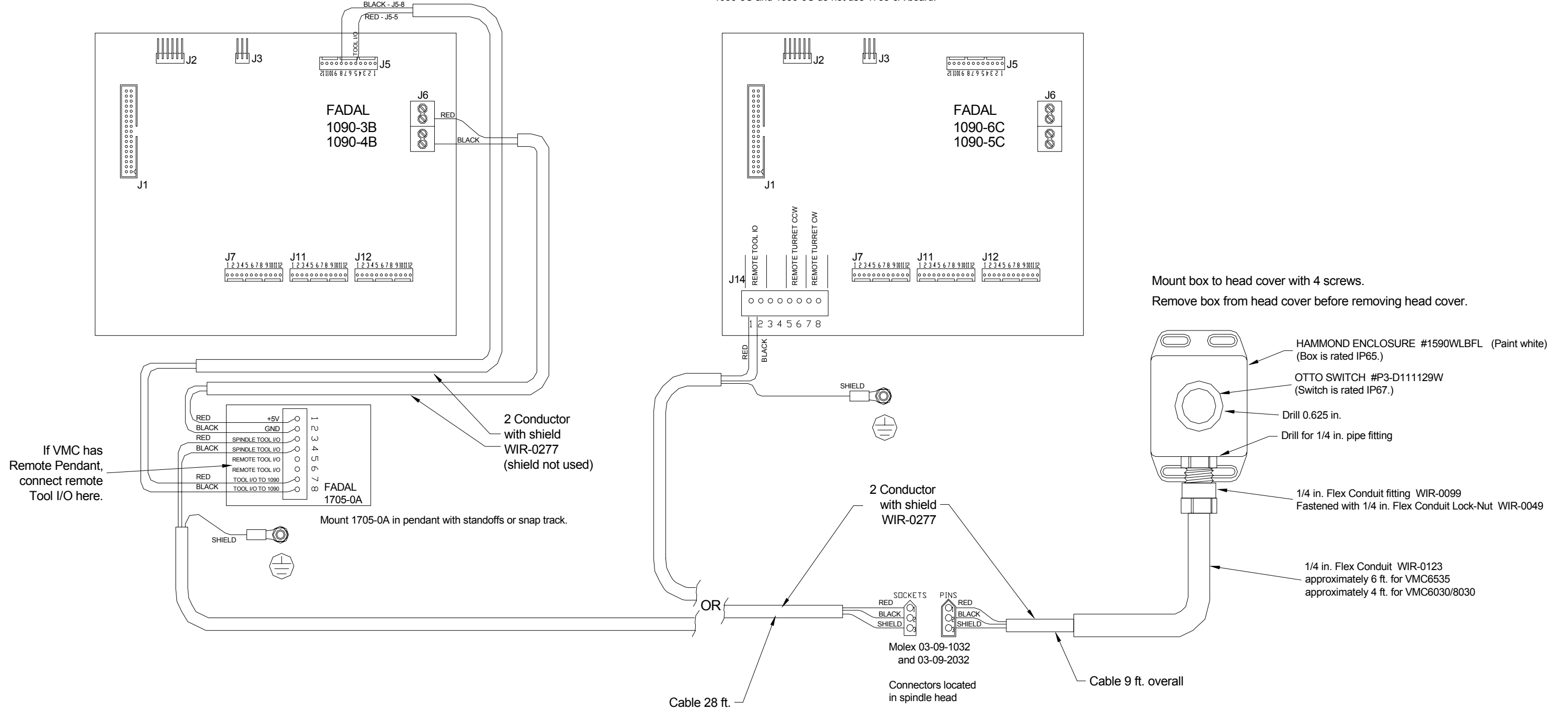
WRG\_0043A\_encoder\_cable\_E5D



# WRG\_0046C\_Tool\_IO\_switch\_on\_spindle

Connection of 1705-0A is the same for all keyboards.

1090-5C and 1090-6C do not use 1705-0A board.



Installation procedure is given in FSP-W1042.